



SEE WHAT OTHERS DON'T

# Explore a continent of discovery

Expedition Cruises  
of the African Coast

2024

[SWANHELLENIC.COM](https://www.swanhellenic.com)

# See what others don't

Some people see things as they are, others look further. Let us take you on a journey, that will change the way you see the world. Sail to some of the most incredible, remote destinations on the planet. When you travel with us, the wonders of the world take on a richer hue.

## Over 70 years of cruise expertise

That's how long we've been navigating the world's waters. Swan Hellenic is built on a passion for exploration, a reputation for safety and professionalism of the highest standard.

## Boutique ships

Just you and nature, that's how you'll feel on our 5 star contemporary Scandinavian inspired ships. With open-plan design, panoramic views and a focus on wellness, they're the perfect place to relax, recharge and explore.

## Intuitive service

When it comes to anticipating your needs, no request is too big or too small. To us, personal and unobtrusive service means everything from making sure you're fully equipped for an Arctic excursion to remembering your favourite gin serve when it comes to pre-dinner drinks.

## Enriching cultural expeditions

Once, we travelled to educate – professors, scientists, researchers. Over the years, we've developed a deep knowledge of the world. Today, we use this knowledge to create immersive cultural experiences that take you to the heart of a place.

Traditional dressed man, Bijagos Archipelago

# A culture of care for people and planet

Swan Hellenic has always been passionate about our planet's rich environmental and cultural heritage. It's in our name and nature, and it's what inspires us to experience the world's wild unspoilt places and explore its rich and diverse cultures, ancient sites and civilisations.

Traditional dressed people, Sierra Leone



## Equality, Diversity & Inclusion

Dynamically inclusive companies and societies are key to sustainable development. As the pioneer of cultural expedition cruising, we welcome adventurers of every age, gender, orientation, nationality and interest to explore worldwide. We promote gender equity and women and girls' empowerment worldwide, and have strong internal policies that ensure our employees enjoy equal opportunities of employment and professional development, irrespective of gender, ethnicity, culture, religion, age, sexual orientation, functional ability and political view.

### Proud member of



### Our focus areas

Swan Hellenic's sustainability policies are fully compliant with and exceed the cruise industry global standards governing its safety, environmental and labour aspects. In line with the UN sustainable development goals, we are focusing on the following 6 key areas.

### Responsible Cruising

We are committed to preserving the beauty of the world we explore for future generations, taking urgent and innovative concrete action to reduce our environmental footprint.

### Climate Action

Exploring the globe, we constantly encounter dramatic evidence of global warming and climate change. This strengthens our resolve to take urgent action - within our organisation and in the destinations we travel to - to combat their causes and mitigate their effects.

### Life in the Water

With our strong seafaring heritage, we are committed to the responsible use of marine resources for sustainable development. This is vital in promoting and conserving the health and biodiversity of the Earth's waters.

### Legacies of the Land

We strive to preserve the natural and cultural landmarks that our expedition cruises explore, promoting and advancing the conservation, restoration and sustainable use of terrestrial ecosystems and historic sites for future generations.

### Thriving Communities

We build strong connections with the communities that host our cultural expedition cruises, respecting their cultural and environmental integrity, while partnering with them to generate positive impacts.

### Quality Education

Education and research empower human potential. Proud of our roots in British academia, we work to support regional research initiatives, ensuring access to inclusive and equitable education and providing lifelong learning opportunities for all.

# Never repeated. Always exceptional.

Every Swan Hellenic sailing is an experience unto itself. Although we have an expertly designed programme for each cruise, we are always open to the unexpected. And the unexpected usually finds us.

Whether that's a migrating pod of whales feeding in an inlet that takes us slightly off course, a hungry polar bear devouring his first meal of the season on a lonely iceberg or an impromptu village celebration; these are the stories that are retold for generations.

You can also design your own bespoke cultural expedition cruise with our Grand Voyages. Combine two or more of our cruise itineraries and see the world your way. Our elegant staterooms have plenty of storage – ideal for longer trips. Embark on the voyage of a lifetime and experience the wonders of our planet on your own unique journey.



Aerial view, Walvis Bay, Namibia

# Exploring with head and heart

Swan Hellenic pioneered cultural expedition cruising in 1954, when we accompanied members of the Hellenic Society around the famous sites of ancient Greece in the company of eminent classicists.

Voodoo ceremonies, Togo



## Explore

Every Swan Hellenic cruise is the same today as it always was, combining geographical exploration with cultural and scientific discovery. We don't just take you to explore the most extraordinary places on earth. We bring you the company of like-minded people and renowned experts, who offer eye-opening lectures and are on hand for informal questions and discussion throughout your cruise.

## Experience

So when you choose Swan Hellenic to see what others don't – you can be sure you'll do so with a full perspective and real insight into the history, cultures, wildlife, flora, geology and geography of the place. Briefings before each disembarkation and recaps afterwards supplement our lectures and talks, stimulating a relaxed social environment that encourages the sharing of experiences.



## Enrich

At the same time, every Swan Hellenic cruise is also full of opportunities for you to develop your creative passions, with professionals on board to support you in photography and more. A library completes the picture, with a multitude of books on every subject, for you to take your interests to another level.

It's the depth of these other dimensions that's unique to Swan Hellenic, making us the first choice of adventurous minds worldwide.

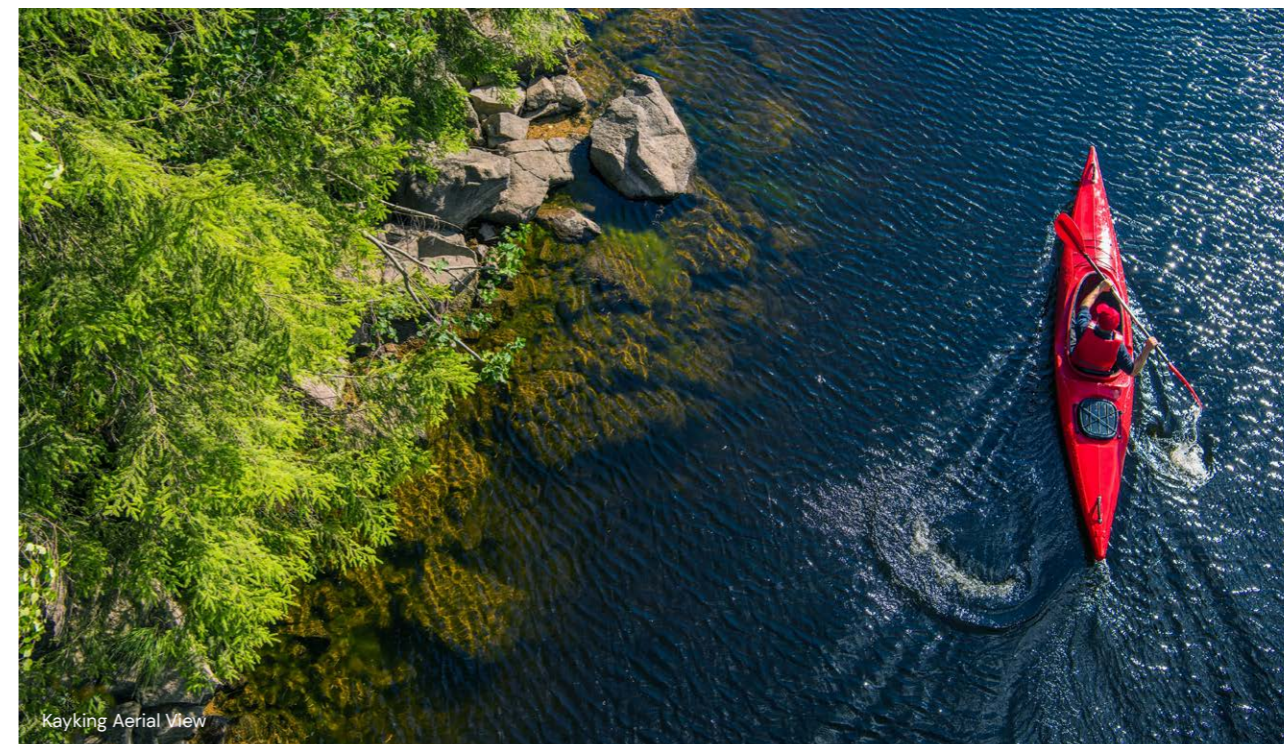
# Learn from the best

Renowned in their respective fields, our onboard experts have unparalleled knowledge of the regions we visit.

From historians to naturalists, meteorologists to ornithologists, our friendly experts will offer you incredible insight into the wildlife, history and geology of the places we visit. Tap into their expertise via our extensive lecture programme, or feel free to interact with them throughout your trip. On board our boutique ship, you're likely to grab a coffee with an expert, birdwatch on the deck alongside an accomplished ornithologist, or chat with them over dinner — they're more than happy to share their knowledge with you!



Jeep tour, Gabon



Kayaking Aerial View



## Botanists

Identify plant life at sea and on land with our expert botanists, and get insights into our ecosystems and climate.



## Geologists

Everyone loves a beautiful landscape. But understanding its geology and how it was formed will change your perspective forever.



## Photographers

Chat to our expert photographers and learn how to best capture movement and light in the extraordinary destinations we visit.



## Historians

Our historians will enrich your expedition experience with incredible stories and unmatched knowledge of the places we visit.



## Ornithologists

Will you be lucky enough to spot a snow petrel? Learn from our ornithologists and be inspired to identify the incredible birds you'll see.



## Marine Biologists

As you encounter whales, dolphins and other marine species, you can consult our marine biologists for fascinating anecdotes.



## Expedition Leaders

In charge of your excursions, these leaders will make sure you get the best opportunities to experience amazing wildlife and landscapes.



## Activity Leaders

From kayaking excursions to hiking trips, you can count on our experienced activity leaders to guide you to remote, inaccessible destinations.



## Naturalists

Charles Darwin may not be on board, but our experts will give you a new understanding of organisms, habitats and the natural world.



# Endless ways to spend your day

There's no such thing as a typical day with Swan Hellenic. We bring you endless possibilities to tailor every moment to your interests and mood, so you'll always have your dream day on board.

Plan your perfect day

## 6am

Waking comfortably refreshed in your stateroom, early risers can join the team on deck for an early morning breakfast. Breathe in the invigorating ocean air as you sip your fresh tea or coffee. What a wonderful way to prepare for the day's adventures exploring a treasure trove of fascinating cultures and spellbinding landscapes.



## 7am

Early risers have the time to take a fitness class or workout in our gym. Refuel with a light continental or substantial cooked breakfast – a perfect foundation for the action-packed day ahead.



## 8am

Prepare yourself for today's shore excursion as we disembark at one of our remote, off-the-beaten-track ports, many of which are only accessible to smaller cruise ships. Our expert-led cultural expedition tours will immerse you in the planet's most remote communities and oldest natural landscapes – get ready to experience sights, sounds and flavours that go beyond the imagination.

## 12pm

Back on board, you'll have the time to share experiences over lunch, whether snacking in the Club Lounge or savouring something a little more substantial in the Swan Restaurant or Pool Bar & Grill.



## 2pm

There may be time after lunch for another shore excursion at our current port of call. Delve into local culture, uncover some of the most biodiverse regions on Earth or listen to the extraordinary tales of the explorers that sailed these seas long ago.

## 4pm

Indulge in our High Seas High Tea or retreat to the comfort of your stateroom for a movie on your flatscreen TV. Sweat it out in our stunning panoramic sauna, take a dip in the pool, take a mindfulness class, or pop to the salon for a relaxing treatment.



## 6.30pm

Each evening a member of our expert team or a guest lecturer will talk you through the day's highlights. We will then discuss the shore excursion plans for the following day.

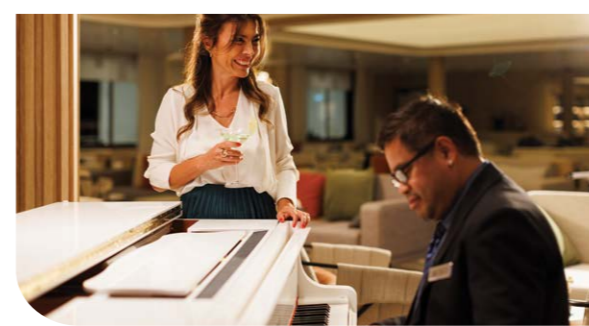
## 7pm

Time to enjoy the pleasures of elegant dining where our chefs have prepared international delights along with wines chosen by our sommelier.



## 9.30pm

End a perfect day with your favourite drink and a wonderful piano performance. Or head out to the deck for some stargazing under the clear night sky.



# All-inclusive experience

We've taken care of the finer details, allowing you to focus your full attention on your cultural expedition cruise experience. Our cruise fares are all-inclusive, so there are no surprise extras or unexpected gratuity bills. Relax in the full knowledge that all you have to do is have a wonderful time.

- Group transfer from the airport to the hotel the day before embarkation, from the hotel to the cruise port on embarkation day and from the cruise port to the airport on disembarkation day
- One night pre-cruise accommodation with breakfast in a 4/5-star hotel or onboard
- All meals onboard
- Onboard accommodation in a stateroom selected category
- 24-hour room service
- Coffee, tea, soft drinks and selected alcoholic beverages available 24-hours per day
- Lecture programmes by our experienced guest speakers
- One selected shore excursion per port of call
- Standard WiFi
- Onboard gratuities & port taxes
- Selected expedition activities led by our expedition team

## Enhance your experience

You also have the option of adding some extra special services to your cultural cruise experience (additional charges apply):

- Air fares (unless otherwise stated)
- Travel insurance
- Optional land programmes and hotel accommodation pre or post cruise
- Premium and private shore excursions
- Kayak and private Zodiac tours in the expedition areas
- Premium alcoholic beverages
- Spa & beauty treatments
- Laundry services
- Retail shop purchases
- Quick turnaround laundry service, allowing you to travel as light as you like



# Experience the unforgettable African coast

A land of fascinating cultures, extraordinary wildlife and spellbinding landscapes, it's no surprise that this enchanting continent has been attracting curious adventurers for centuries. The birthplace of humankind, Africa is home to over 50 unique and diverse countries, enduring traditions, age-old rites and an undeniably rich cultural heritage.

The majesty of Africa's astounding natural beauty is unparalleled. From lush rainforests, and sub-Saharan savannahs, to glorious tropical coastlines and endless rippling deserts. Whether you're exploring one of its bustling cities, snorkelling in crystal clear waters, watching roaming wildlife on safari or investigating the ancient worlds of Egypt and Petra, no matter where you are in Africa, unforgettable adventures await.

## Cruises of the African coast

Itinerary	From→To	Ship	Nights	Departure
Safaris of the Southwest Coast	Cape Town → Luanda	SH Vega	10	25 Mar 2024
Unspoilt Wilds of Southwest Africa	Luanda → Accra	SH Vega	13	4 Apr 2024
Cultural Crucibles of West Africa	Accra → Dakar	SH Vega	13	17 Apr 2024
Pristine Islands of West Africa	Dakar → Dakar	SH Vega	8	30 April 2024
Mysteries of Carthage and the Moors	Lisbon → Palermo	SH Diana	10	10 Aug 2024
Gems of the Red Sea	Limassol → Jeddah	SH Diana	11	26 Sep 2024
Paradise Isles of the Indian Ocean	Port Victoria → Mombasa	SH Diana	11	16 Oct 2024
Madagascar and its Eastern Islands	Mombasa → Maputo	SH Diana	11	26 Oct 2024
Extraordinary Southern Africa	Maputo → Cape Town	SH Diana	7	6 Nov 2024

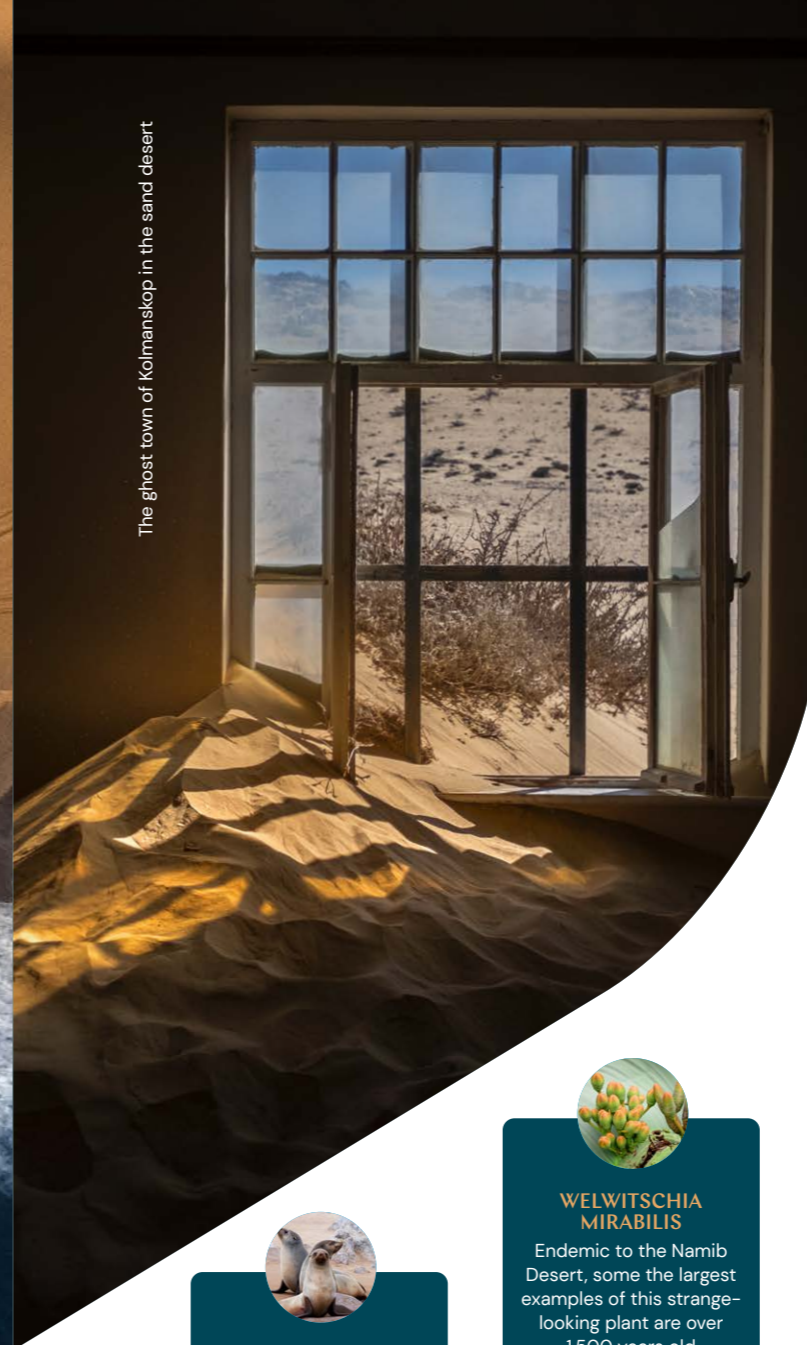
# Safaris of the Southwest Coast

📅 25 Mar - 4 Apr 2024 🏠 SH Vega  
📍 Cape Town - Luanda 📅 10 nights

Witness one of the world's most spectacular coastlines as you cruise from South Africa to Angola. Starting in the culture-packed city of Cape Town, your unforgettable 10-night expedition will sail along the wonderful west coast of Africa. Explore the Atlantic coastline of Namibia, the driest country in sub-Saharan Africa, and one of the only places on Earth where the desert comes right to the ocean's edge. Then sail on to Angola with its lush landscapes and unspoilt shores, brimming with wildlife, including flamingos, pelicans, whales and dolphins. Your journey ends in Angola's colourful capital, the Portuguese-influenced city of Luanda, rich in history and natural beauty.

Aerial view between ocean and desert, Walvis Bay, Namibia

The ghost town of Kolmanskop in the sand desert



### SEAL THE DEAL

Namibia's Pelican Point is home to an array of wildlife, including a colony of thousands of Cape fur seals



### WELWITSCHIA MIRABILIS

Endemic to the Namib Desert, some the largest examples of this strange-looking plant are over 1,500 years old

Day	Visiting
1-2	Cape Town
3	At Sea
4	Luderitz
5-7	Walvis Bay
8	At Sea
9	Namibe, Angola
10	At Sea
11	Luanda

Ports, port order and itinerary duration may vary, for the most up-to-date details see swanhellenic.com

→ Starting from € 14,029 per person in double Oceanview Stateroom occupancy



## 5 Unmissables

- Soak up sensational panoramic views from Cape Town's iconic Table Mountain. This World Heritage site is home to an exceptional variety of wild flowers and plant life.
- Experience extreme ecosystems as you explore the natural beauty of the Namib desert, home to sweeping dunes and stunning coastlines.
- Immerse yourself in West African-German history and architecture with a visit to Goerke House. Built in 1910, this extravagant mansion overlooks the harbour town of Lüderitz.
- Embrace the eeriness of the Kolmanskop ghost town, a place slowly being reclaimed by the sandy desert that surrounds it.
- Explore Luanda's old town and discover centuries of Portuguese influence with trips to the baroque Sé Cathedral, Iron Palace, and the impressive 15th century Fortress of São Miguel.



## Extraordinary Encounters

Explore the extraordinary Namibe Partial Reserve and discover the flora and fauna that have adapted to desert life in this harsh environment. Observe black rhinos, oryx, elephants, ostrich, wildebeest, flamingos and fur seal colonies all thriving in this incredible corner of the Namib Desert. One of the world's oldest and most unusual plants also lives here – the rare Welwitschia Mirabilis, with some specimens thought to be between 1,000 –1,500 years old.



Flamingo in Swakopmund, Namibia



Kwanza River Angola

## Live it!

### Kolmanskop Ghost Town Walking Tour Luderitz | Namibia

Explore the forgotten streets and homes of Kolmanskop, a former diamond mining town. Once buzzing with prosperity, most of the town has now been consumed by the Namib Desert.

**Included**

### Dinner in the Dunes Swakop River Canyon | Walvis Bay

Travel to the Swakop River Canyon for an unforgettable evening under the stars. Strange rock formations and dry riverbeds mingle with tables draped in linen, subtle lighting, and candles reflecting off canyon walls to create a relaxed dinner venue under uninterrupted desert skies. Entertainment options include a marimba band, fire spinners and more.

**Included**

Stepping Out   
Zodiac

# Unspoilt Wilds of Southwest Africa

📅 4 - 17 Apr 2024 🌤️ SH Vega  
📍 Luanda - Accra 🗓️ 13 nights

This incredible 13-nights expedition cruise from Angola to Ghana will reveal the diversity of this vast continent. Explore pristine, biodiverse shorelines, harbouring volcanic islands, rainforests, mangrove forests, and dazzling lagoons and beaches. Experience elephants, leopards, hippos, and chimpanzees in their natural habitats. Then encounter unique customs and landscapes, as you voyage through some of the least-visited parts of Africa.

São Tomé and Príncipe



African Traditional Wooden Masks



**TU PARLES FRANÇAIS?**  
Africa is home to the largest number of French speakers in the world, with 120 million speakers across the continent



**NATURE'S BOUNTY**  
Sparsely populated Bom Bom Island – a tiny speck just off Príncipe – is home to dense forests, pristine beaches and rich biodiversity



Day	Visiting
1	Luanda
2	At Sea
3-5	Pointe-Noire
6	At Sea
7-8	Port-Gentil
9	Sao Tome, Sao Tome Island
10	Santo Antonio, Principe Island
11	At Sea
12	Cotonou
13	Lome, Togo
14	Tema (Accra), Ghana

Ports, port order and itinerary duration may vary, for the most up-to-date details see swanhellenic.com

→ Starting from € 17,801 per person in double Oceanview Stateroom occupancy



## 5 Unmissables

- 🌿 Visit Gabon's South Loango National Park, famous for its beachcomber forest elephants and surfing hippos. Explore this pristine ecosystem with its mangrove forests, sublime waterways, and vast savannahs.
- 🌿 Explore the expansive Grand Marché in Togo's capital city of Lomé and get to know the Congolese locals. People come from miles around to sample this colourful market's traditional cuisine.
- 🌿 Visit the São Tomé Peak, a majestic volcanic tower rising 2,024m above sea level. Coffee and cocoa plantations cover the lower slopes, with trees swathed in orchids, lichens, and other epiphytes found higher up.
- 🌿 Observe the vibrant West African Voodoo culture with a visit to Lomé's Akodessawa Voodoo Market. One of West Africa's official religions, Voodoo, is shrouded in ancient tradition and mystery.
- 🌿 Spend the day learning about the Republic of Congo's incredible natural history and conservation efforts at the biodiverse Conkouati Reserve.

## Extraordinary Encounters

Gabon's South Loango National Park is also known as 'Africa's last Eden', and you'll soon understand why when you get here. In addition to the elephants, buffalo and chimpanzees that live here, Loango National Park is one of the few places where it's possible to see habituated lowland gorillas.

The gorillas' movements are unpredictable, and it can take several hours of hiking through mud, small streams, and swamps to find them – what an adventure!

Portrait shot of a big gorilla in Congo Reserve

Women boating on the lagoon of the stilt village Ganvie

## Live it!

### Ganvie Village Ganvie | Cotonou

Experience Ganvie, the largest African village on stilts. Take in the Tofinou's bamboo huts built in the middle of Lake Nokwe, then watch an Egun mask procession, featuring colourful cloth masks that represent spirits.  
**Included**

### Nature of Sao Tome São Tomé e Príncipe | Guinea

Journey to the centre of the island and learn about the historical events that took place at Santíssima Trindade church. Then explore the island's nature with a trip to Bom Sucesso's Botanical Garden, home to over 400 species of endemic flora.  
**Optional**

Stepping Out



# Cultural Crucibles of West Africa

17 - 30 Apr 2024 SH Vega  
 Accra - Dakar 13 nights

Cruise from Ghana to Senegal and you'll experience a combination of intriguing cultures, colourful history and remarkable wildlife. Your fascinating 13-night cruise begins in Accra, Ghana, where you'll get to sample local culture and immerse yourself in the capital's compelling past. Next, discover the bustling cities of Sierra Leone with their histories as settlements for freed American slaves, before sailing to the Gambia via far-flung islands covered in captivating mangroves, home to hippos and pygmy cows. Your journey ends in the energetic city of Dakar, Senegal, finishing an incredible voyage to some of Africa's least-visited cultures, cities and landscapes.

Abandoned buildings, Ivory Coast



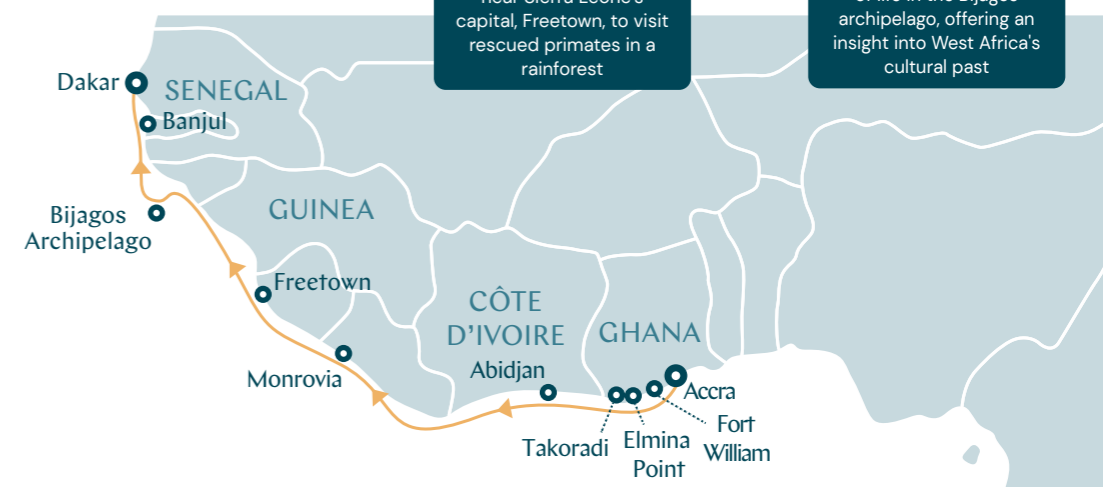
Young traditional dancer, Sierra Leone

## 5 Unmissables

- Explore Accra and sample delicious local dishes, such as tangy jollof rice, waakye (rice and beans) and ga kenkey (sour dumplings).
- Visit Africa's largest market circle, Takoradi Market, and shop with locals in a lively marketplace steeped in over 100 years of history.
- Discover the beautiful beaches and crystal-clear waters alongside age-old traditions on the Bijagos archipelago. These sparsely populated islands' people and culture have remained unchanged for centuries.
- Uncover the heart of Banjul, Gambia's capital, at the vibrant Albert Market, renowned for its dazzling selection of fabrics, including exquisite batiks that showcase the essence of Gambian artistry.
- Wander around the colonial-era building-lined streets of the charming town of Grand-Bassam, the former capital of French West Africa and a UNESCO World Heritage Site.

Day	Visiting
1	Tema (Accra), Ghana
2	Cape Coast (Fort William)
2	Elmina Point
2-3	Takoradi
4	Abidjan
5	At Sea
6	Monrovia
7	At Sea
8	Freetown
9	At Sea
10	Bijagos Archipelago, Bolama
10	Bijagos Archipelago, Canhabaque Island
11	Bijagos Archipelago, Orango Island
12	Banjul
13	Dakar
14	Dakar

Ports, port order and itinerary duration may vary, for the most up-to-date details see swanhellenic.com



**SPECIAL SANCTUARY**  
 Stop by Tacugama Chimpanzee Sanctuary, near Sierra Leone's capital, Freetown, to visit rescued primates in a rainforest



**LIVING HISTORY**  
 Traditional fishing practices are still a way of life in the Bijagos archipelago, offering an insight into West Africa's cultural past

→ Starting from € 17,801 per person in double Oceanview Stateroom occupancy





Rare saltwater hippo, Orango Island

## Extraordinary Encounters



Guinea-Bissau's remote Bijagos archipelago is a protected biosphere reserve and one of the few places to see rare saltwater hippos and endangered western chimpanzees. During the day, you'll find the hippos submerged in swampy lagoons. Later in the day, these incredible animals relocate to the beach to bathe in the salt water.



Elmina Castle, Ghana

## Live it!

### Elmina Slave Castle Elmina Point | Ghana

Travel to the fishing port of Elmina to explore the historic castles and dungeons – the ancient buildings tell the tales of the region's gold, ivory and slave trading past. Discover Elmina Castle, the oldest and largest European build-ing in Africa, which is now a UNESCO World Heritage site. Then investigate Elmina's old town with its atmospheric alleys and fascinating Posuban – shrines to ancient Asafo warriors.

#### Included

### Tacugama Chimpanzee Sanctuary Freetown | Sierra Leone

Founded in 1995 by conservationists Bala and Sharmila Amarasekaran, the sanctuary is a safe haven for over 100 rescued chimpanzees. This is a rare chance to learn about the lives of chimps, and witness our closest evolutionary ancestor up close.

#### Optional

**Stepping Out**   
Zodiac

# Pristine Islands of West Africa

📅 30 Apr - 8 May 2024 🏠 SH Vega

📍 Dakar - Dakar 🗓️ 8 nights

Embark on an extraordinary 8-day cruise from Dakar, Senegal, to the captivating Bijagós islands, an archipelago of undiscovered treasure of West Africa. Immerse yourself in the untouched tropical beauty of these 88 islands, all recognised as a UNESCO Biosphere Reserve. Uncover Bolama's remnants of colonial history, witness the intricate cultural rituals of Canhabaque, and in Poilao, encounter a colony of green sea turtles. You'll also have the rare opportunity to encounter saltwater hippos in Orango's wilds, a remarkable experience that few have the chance to witness. As your cruise reaches its conclusion, you return to Dakar, savouring the memories of the remote beauty, rich cultural heritage and extraordinary wildlife.

Aerial view Bijagos Archipelago, Guinea Bissau



Local Food

## 3 Unmissables

🦏 Encounter the rare and gentle saltwater hippos, also known as African manatees, in the mangrove-lined waterways on Orango Island.

🎭 Experience the vibrant Kumpo dance, a powerful tradition of the Bijagós people, with intricate footwork, dynamic movements and rhythmic drumming in Canhabaque Island's villages.

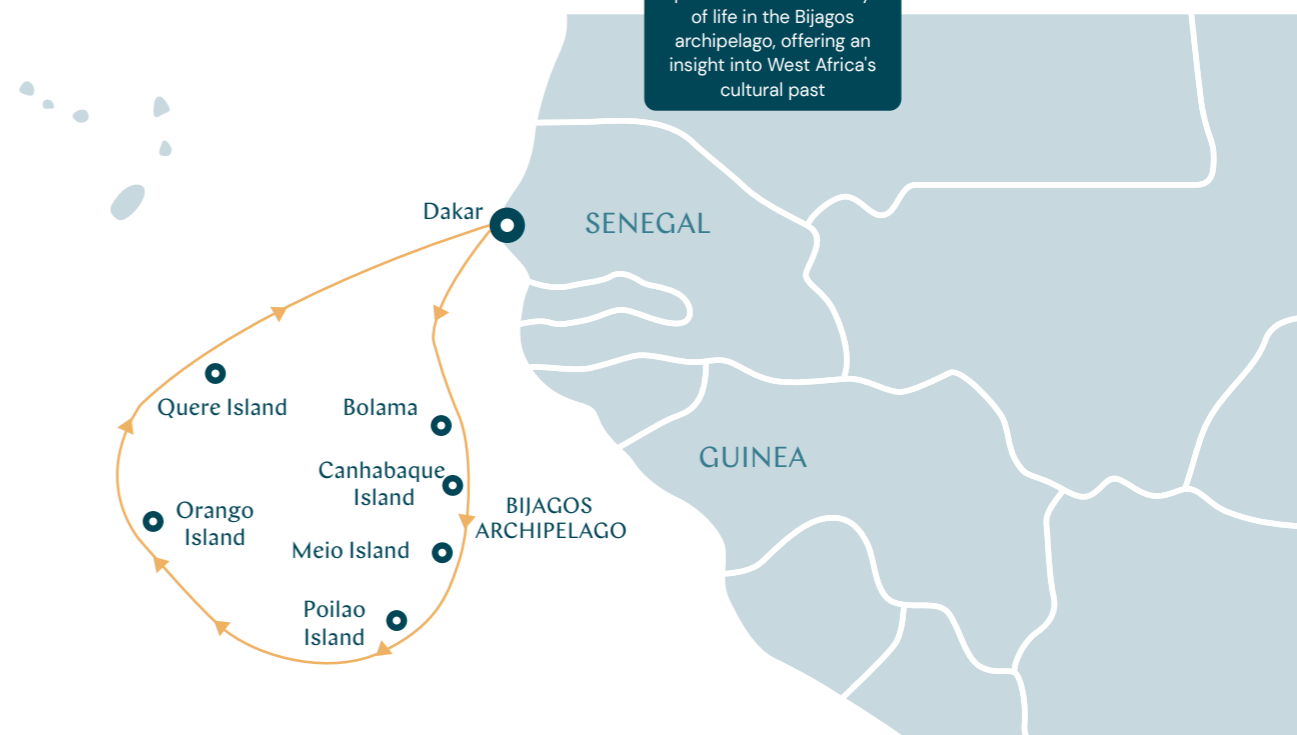
🦏 Take to the zodiacs and explore Bolama Island, once the capital of Portuguese Guinea, now an eerie ghost town with remnants of its colonial grandeur.

Day	Visiting
1	Dakar
2	At Sea
3-7	Bijagos Archipelago
8	Dakar
9	Dakar

Ports, port order and itinerary duration may vary, for the most up-to-date details see swanhellenic.com



**LIVING HISTORY**  
Traditional fishing practices are still a way of life in the Bijagos archipelago, offering an insight into West Africa's cultural past



→ Starting from € 11,515 per person in double Oceanview Stateroom occupancy



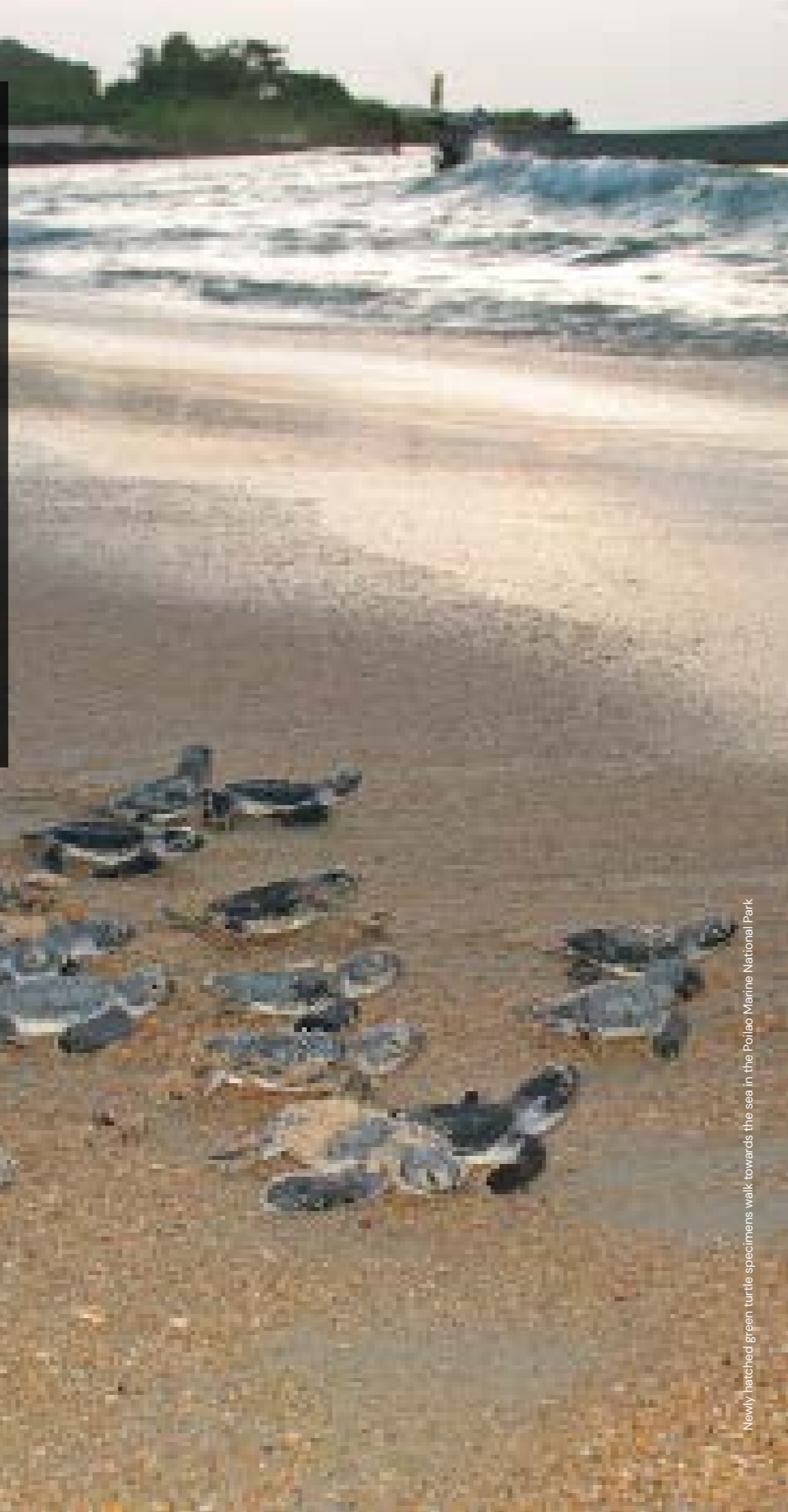


# Extraordinary Encounters

Green sea turtles are gentle creatures found in tropical and subtropical waters worldwide. They inhabit coastal areas, coral reefs and seagrass beds, playing a vital role in maintaining seagrass ecosystems.

The island of Poilao, a captivating destination within the Bijagós archipelago, is renowned as a haven for green sea turtles. While not considered extremely rare, green sea turtles are classified as an endangered species. Poilao's preservation efforts ensure the continued survival of these remarkable creatures.

Marvel at their graceful presence in the crystal-clear waters and witness the nesting sites where female green sea turtles return to their birth beaches to delicately lay their eggs. They dig nests in the sand and lay a clutch of around 100 to 200 eggs, which incubate for approximately 60 days, with hatching babies making their way to the ocean.



Newly hatched green turtle specimens walk towards the sea in the Poilao Marine National Park



Traditional dressed man, Bijagos Archipelago

## Live it!

### Zodiac cruising around the islands Bijagos Archipelago | Guinea Bissau

Immerse yourself in the unparalleled beauty of the Bijago Archipelago as our expert expedition team guides you on a remarkable journey from the water.

Our Zodiac boats grant exclusive access to remote landing sites and narrow passages, unveiling hidden wonders beyond the reach of traditional cruise ships.

At Swan Hellenic, our unforgettable shore excursions allow you to fully embrace the remarkable beauty of this archipelago. Explore exclusively by Zodiac, accompanied by our exceptional expedition team, and prepare for a truly immersive experience that brings the essence of expedition cruising to life.

#### Included

Stepping Out   
Zodiac

# Mysteries of Carthage and the Moors

📅 10 - 20 Aug 2024 🏠 SH Diana  
📍 Lisbon - Palermo 🗓️ 10 nights

Embark on a captivating 10-night historical odyssey, tracing the Roman heritage of coastal gems in Portugal, Spain, Morocco, Algeria, Tunisia and Italy. Departing from the culturally rich city of Lisbon, this specially curated voyage allows ample time to explore remarkable Roman sites in Spain and along the North African coast, such as the ancient city of Carthage in Tunisia, a powerful rival to Rome itself; Tipaza, Algeria, known for its impressive ruins including a Roman theatre and basilica; and Cotta in Morocco. Unravel the intricate history and immerse yourself in the grandeur of the Roman Empire throughout the Mediterranean region. Conclude this enriching journey in Palermo, Sicily, following in the footsteps of ancient Romans along the picturesque Mediterranean coast.

Chefchaouen, Morocco



Snacks with cod fish in tapas bar in Seville

## 5 Unmissables

🏰 Get lost in the whitewashed, winding alleyways of the Kasbah medina in Algiers as you soak up the city's historic architecture.

🏰 Visit Cape St. Vincent, a breathtaking headland on the southwest coast of Portugal. This special place has been revered since Phoenician times and is steeped in military history. Today the area is protected as part of the Southwest Alentejo and Vicentine Coast Natural Park, where rare bird species and unique flora thrive.

🏰 Feast on history and tapas in the Andalusian capital of Seville. Then explore the birthplace of flamenco in the courtyards of the riverside district of Triana.

🏰 Venture into the past with a trip to Carthage Archaeological Park. Dating back to 900 BCE, this fascinating archaeological site preserves artefacts of ancient civilisations and great trading empires.

🏰 The vibrant international melting pot of Tangier is a gateway to northern Africa and Morocco. Visit the Kasbah Museum of Mediterranean Cultures, housed in the former sultan's palace of Dar El Makhzen, to discover the history of this amazing area.

Day	Visiting
1	Lisbon
2	Portimao
3-4	Seville
5	Tangier
6	Oran
7	Algiers
8	Bejaia
9	Annaba
10	La Goulette
11	Palermo

Ports, port order and itinerary duration may vary, for the most up-to-date details see swanhellenic.com



### TIPAZA

Immerse yourself in Tipaza's Roman heritage with its semi-circular theatre and 4th-century AD basilica, beautifully framed by the azure Mediterranean Sea.



→ Starting from € 8,886 per person in double Oceanview Stateroom occupancy





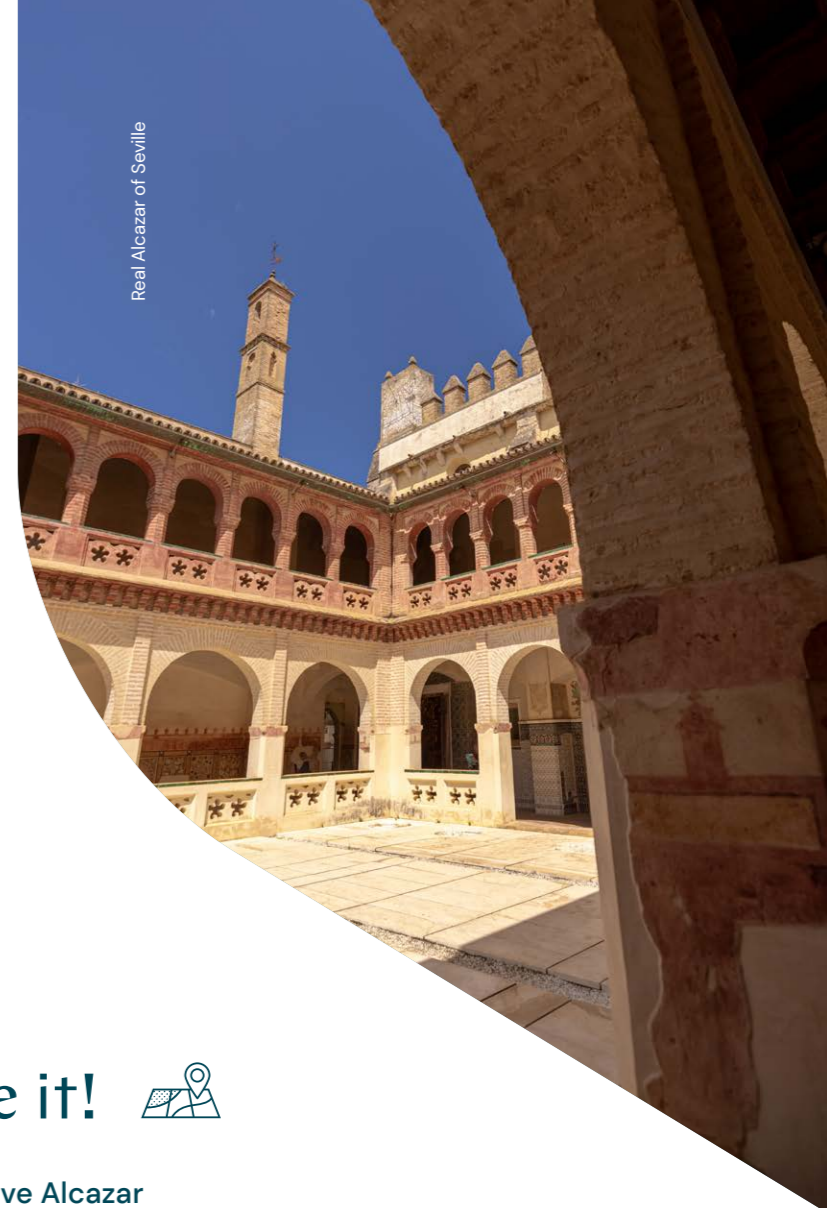
Barbary macaque, Algeria

## Extraordinary Encounters



A visit to Gouraya National Park in Algeria's Bejaia Province offers a rare chance to see the Barbary macaque in its natural environment.

The Barbary macaque is the only macaque species that live outside Asia, and the only primate species found north of the Sahara. The survival of the Barbary macaque is under threat, and there are now fewer in the wild than lowland gorillas. Gouraya National Park offers a sanctuary for these animals and a unique opportunity to learn more about this fascinating primate.



Real Alcazar of Seville

## Live it!

### Exclusive Alcazar Seville | Spain

Explore the Real Alcazar of Seville, the oldest palace in Europe, on an exclusive evening visit. This Spanish cultural treasure still serves as one of the residences of Spain's King, Felipe VI, and is thought to be one of the best-preserved examples of Moorish architecture in the country. Guided by a knowledgeable expert, you'll discover the secrets and breathtaking beauty of this 14th century structure on your unforgettable private visit.

#### Included

### The Roman Ruins of Djemila Djemila | Algeria

After a scenic coach ride, you'll head to Djemila's vast Roman ruins. Known for their sheer size, impressive mosaics and imposing buildings, these magnificently preserved Roman remains date back to the 1st century CE. Your guide will walk you through this once buzzing Roman city on a fascinating historical tour, taking in the Arch of Caracalla, the Forum, the Basilica, and much more.

#### Optional

# Gems of the Red Sea

☉ 26 Sep – 5 Oct 2024    🏠 SH Diana  
 📍 Limassol – Jeddah    📅 11 nights

Embark on an epic journey steeped in centuries of history on a 10-night Red Sea expedition cruise. Departing from the Egyptian port city Port Said, you'll sail through the Suez Canal en route to the Red Sea. You'll have plenty of time to discover the charms of the Red Sea, from the beauty of swimming in its waters, to visiting the intriguing ports of Sharm El-Sheikh, Aqaba and Safaga. Next, you'll explore Saudi Arabia's holy city of Medina, and discover the mountainous beauty of Marmara Island, before finally arriving in Jeddah, Saudi Arabia's jewel.

Valley of the Kings



Mount Sinai

Day	Visiting
1	Limassol
2-3	Port Said
4	Suez Canal
5	Sharm El Sheikh
6	Aqaba
7-8	Safaga
9	At Sea
10-11	Yanbu
11	Yanbu, Ras Al Baradi Beach
12	Jeddah

Ports, port order and itinerary duration may vary, for the most up-to-date details see swanhellenic.com



→ Starting from € 8,143 per person in double Oceanview Stateroom occupancy



## 5 Unmissables

🚢 Follow past explorers as you sail on the man-made Suez Canal. Travelling on this historic waterway – an extraordinary feat of engineering – is one of the world's great maritime experiences.

🚢 Explore the stunning Wadi Mandar valley and its geological marvels. Is it said that this is the place where Moses received the Ten Commandments from God.

🚢 Head across the Egyptian desert from Safaga to visit the entrancing ancient Egyptian sites of the Valley of the Kings and Karnak Temples.

🚢 Wander around the ancient old town of Jeddah and admire the centuries-old coral tower houses, which feature colourful wood-latticed rawasheen balconies, known as mashrabiyas.

🚢 Go snorkelling at the Ras Mohamed Nature Reserve in Sharm El Sheikh. Crystal clear waters dancing with colourful fish and coral make it the ideal place for underwater adventures.



### CANAL CRUISE

Ships sail very slowly along the 101-mile long Suez Canal. This artificial waterway passes through the heart of the desert at sea level.



### HOLY HISTORY

Considered to be the cradle of Islamic culture and civilisation, the old city of Medina is second only to Mecca in its holiness.

## Extraordinary Encounters



Egypt's lively Sharm El-Sheikh is an excellent spot to begin exploring the abundant waters of the Red Sea, home to some of the world's most spectacular underwater scenery. Over 300 species of coral and 1,200 species of fish live here, ten per cent of which are found nowhere else in the world.

Swim and snorkel through the crystal-clear waters and observe the incredible variety of tropical fish darting in and out of the beautiful coral reefs. Look out for schools of striking butterflyfish, curious clownfish, parrotfish, angelfish, sea turtles, and occasionally dolphins and reef sharks, to name just a few of the incredible variety of species you might spot in these waters.



Red lion fish



Petram Jordan

## Live it!

### City of Petra Guided Tour Aqaba | Petra

Spend a full day visiting Jordan's most famous attraction, the spectacular rose-red City of Petra. See impressive structures carved out of rose-coloured stone, such as temples, royal tombs and a 3,000-seater amphitheatre, along with Petra's most famous monument, the Treasury, with its magnificent, intricately carved façade. The tour ends with an optional horse-drawn buggy ride through the narrow Petra Valley.

**Optional**

### Red Sea Snorkelling Adventure Na'ama Bay | Sharm El-Sheikh

Go on an underwater adventure in the Red Sea. Guided by a qualified instructor in an area near Na'ama Bay, you'll be transported to an exotic marine world as you swim and snorkel in crystalline waters, and get close to multi-coloured fish and coral.

**Optional**

## Stepping Out



Snorkelling

# Paradise Islands of the Indian Ocean

16 Oct – 26 Oct 2024 SH Diana  
 Port Victoria – Mombasa 11 nights

Experience a slice of tropical paradise far from the crowds on this beautiful 11-night voyage. You'll explore a handful of the remote 115 islands that make up this Indian Ocean archipelago, before heading to Tanzania and Kenya. Discover Mombasa, known for their rich cultures and pungent spices. Embrace pure joy as you dive, snorkel and even surf in these waters filled with colourful fish. Then head on land to encounter nesting turtles, giant tortoises, pink flamingos and red fodies in their natural habitat.

White sand beach of Pemba Island, Zanzibar



## 5 Unmissables

Visit the spectacular Aldabra Atoll. This fascinating World Heritage Site is one of the world's largest coral atolls, consisting of four large coral islands, enclosing a shallow tropical lagoon, and surrounded by a reef.

Discover the tranquil beauty of Pemba Island. Cloaked in lush vegetation, this hilly island is famed for its extensive clove farms, peaceful islets and white-sand beaches. Pemba's biodiverse forests are a haven for grazing blue duiker, and the Pemba flying fox, identifiable by its distinctive rusty-red fur and large wingspan.

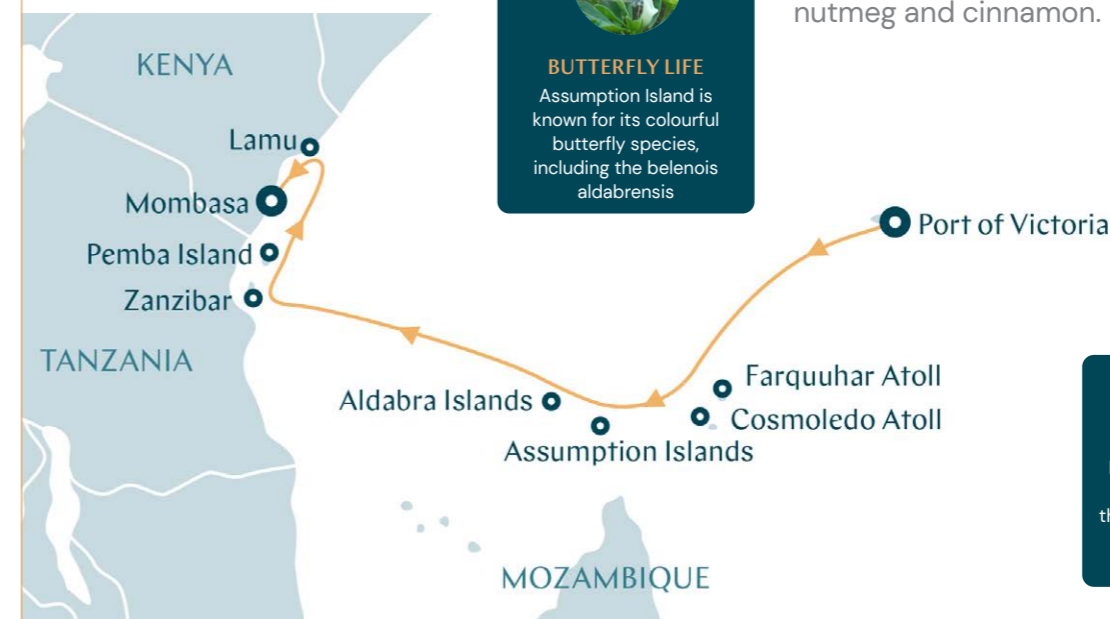
Lose yourself in the history of Zanzibar's Stone Town. This World Heritage Site is a labyrinth of winding alleys, bustling marketplaces, and breathtaking mosques and grand Arab residences.

Visit the World Heritage-listed Lamu Old Town. The history of this fascinating town dates back to the 12th century, and it was once an important trading centre. Marvel at how well the mangrove timber and coral stone have been preserved, and appreciate the elaborately carved wooden doors.

Take in the aromas of Zanzibar's market stalls heaped with locally grown spices like nutmeg and cinnamon.

Day	Visiting
1	Port Victoria, Mahe Island
2	At Sea
3	Farquhar Atoll
4	Cosmoledo Atoll
5-6	Aldabra Island
6	Assumption Island
7	At Sea
8	Zanzibar
9	Pemba Island
10	Lamu
11	Mombasa

Ports, port order and itinerary duration may vary, for the most up-to-date details see swanhellenic.com



**BUTTERFLY LIFE**  
 Assumption Island is known for its colourful butterfly species, including the belenois aldabrensis

**BOTANICAL SIGHTS**  
 Port Victoria's Botanical Gardens are famed for their slender coco de mer palms and ambling giant tortoises

→ Starting from € 10,143 per person in double Oceanview Stateroom occupancy

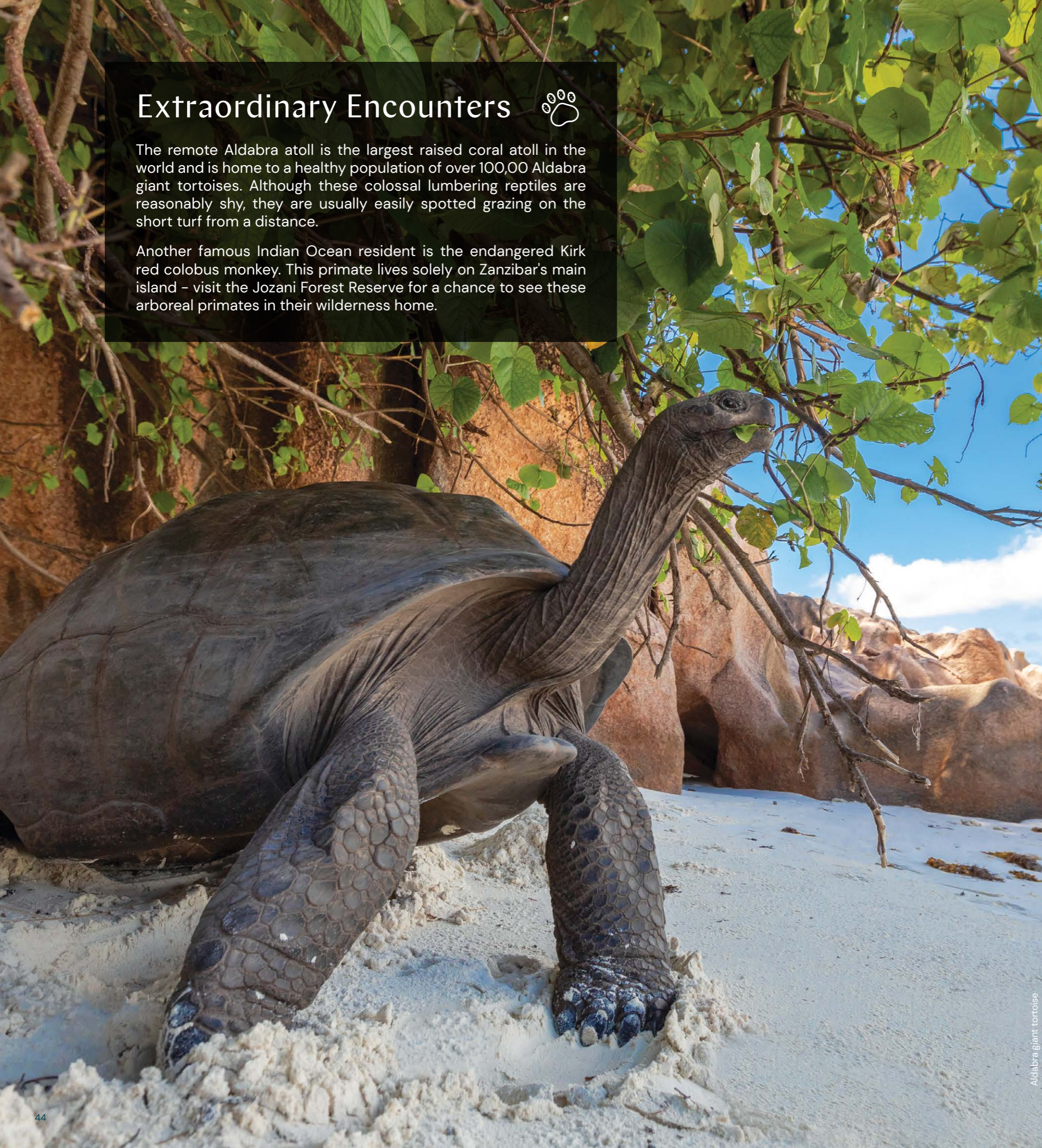


## Extraordinary Encounters



The remote Aldabra atoll is the largest raised coral atoll in the world and is home to a healthy population of over 100,000 Aldabra giant tortoises. Although these colossal lumbering reptiles are reasonably shy, they are usually easily spotted grazing on the short turf from a distance.

Another famous Indian Ocean resident is the endangered Kirk red colobus monkey. This primate lives solely on Zanzibar's main island – visit the Jozani Forest Reserve for a chance to see these arboreal primates in their wilderness home.



Aldabra giant tortoise



Lamu old island in Kenya

## Live it!



### Lamu Old Town Visit Lamu | Kenya

Explore Lamu Old Town, East Africa's oldest and best-preserved Swahili settlement. Stroll tiny alleyways and discover ornate, well-preserved buildings built from coral stone and mangrove timber. Admire intricately carved wooden doors and arcaded facades, or take a peek into hidden courtyards. Then immerse yourself in Swahili culture with a visit to the town's museum and fort.

#### Included

### Sandbank Dhow Cruise and Snorkel Zanzibar | Tanzania

Embark on a 30-minute scenic cruise to the sandbank in a traditional, hand-built dhow-boat. Then spend the day relaxing in the shade, sunbathing, or swimming and snorkelling at a nearby reef. Refreshments and snacks will be provided, along with a Zanzibar-style seafood-and-beef buffet lunch, followed by coffee served with Amarula liquor.

#### Optional

**Stepping Out**

 Zodiac  Snorkelling

# Madagascar and its Islands

📅 26 Oct – 6 Nov 2024 🏠 SH Diana  
📍 Mombasa – Maputo 🗓️ 11 nights

Our cultural expedition cruise leaves the Kenyan capital of Mombasa and heads via the stunning landscapes of the Seychelles for a voyage discovering the Western Madagascar & Mozambique coasts. Encounter rarely visited beaches, and rainforests and gardens – home to incredible wildlife, from dolphins, whales, turtles and giant tortoises to brightly coloured pink flamingos and rainbow chameleons. Swim in pristine waters, or spend your time on land taking in the aromas of local spices piled high on market stalls. Your voyage finishes in Maputo, the intriguing capital of Mozambique, where you'll feel uplifted by nature in all its splendour.



Aldabra giant tortoise

Day	Visiting
1	Mombasa
2	At Sea
3-4	Aldabra Islands
5	Assumption Island
6	Nosy-Be
7	Mahajanga
8	At Sea
9	Morondava
10	Toliara
11	At Sea
12	Maputo

Ports, port order and itinerary duration may vary, for the most up-to-date details see swanhellenic.com



## 5 Unmissables

🌿 Explore Madagascar's lush virgin rainforests, packed with species that have evolved in isolation on this biodiverse island. Look out for lemurs, chameleons, and hundreds of species of birds.

🌿 Explore the other-worldly Reniala Nature Reserve. The small 45-hectare reserve was set up by a couple who wanted to preserve southwestern Madagascar's unique flora and fauna.

🌿 Visit the world's largest tortoise colony. Over 100,000 lumbering giant tortoises live on the isolated landscape of the Aldabra Islands. One of the world's largest land tortoises, the Aldabra tortoise can live for up to 150 years.

🌿 Take in the hauntingly beautiful sight of Madagascar's 'Avenue of the Baobabs', a dirt road framed by dozens of ancient trees once part of a rich forest. The trees here are more than 800 years old, with trunks over 50 metres in circumference.

🌿 Discover the extraordinary Ankarafantsika National Park, a vast dry forest area, lakes, canyons and savannas. Ankarafantsika is home to many species, including the rare mongoose lemur.



### ECLECTIC CULTURE

Madagascar is home to over 18 different tribes, traditions and cultures, with its people (the Malagasy) originating from Borneo, East Africa, the Middle East and many other parts of the world



### NATURAL BEAUTY

Mahajanga's Cirque Rouge is a remarkable natural amphitheatre whose crumbling rocks are a blend of red, ochre and pale pink

→ Starting from € 11,012 per person in double Oceanview Stateroom occupancy



Traditional fishing pirogues in Anakao, Madagascar





Ring-tailed lemur, Madagascar

## Extraordinary Encounters



The flora and fauna of Madagascar have evolved in isolation since it split from the African continent an estimated 160 million years ago. The wildlife here is abundant and unusual in equal measure. Over 90 per cent of the island's mammals exist nowhere else on earth – a true haven for wildlife enthusiasts.

Come face to face with curious ring-tailed lemurs, walk amongst towering baobab trees and look out for the colourful chameleons, experts of disguise. The birdlife on the island is also plentiful, with many endemic species, including the Madagascar bee-eater and the Madagascar pygmy kingfisher. Look out for flocks of colourful vasa parrots in the skies above the forests.

On nearby Aldabra Atoll, observe some the largest and oldest tortoises in the world. These gentle giants can weigh up to 250 kilograms, grow up to 1.5 metres long, and live up to 150 years old.



Avenue of the Baobabs

## Live it!

### Avenue of the Baobabs Tour Morondava | Madagascar

Visit the incredible Avenue of the Baobabs in the coastal town of Morondava. These magnificent trees are a point of local pride, but they're also under threat from farming practices. You'll get to take part in reforestation activities with NGO Fanamby, then walk along the Avenue of centuries-old giants, which is said to be the most beautiful road in Madagascar.

#### Included

### Black Lemur Sanctuary Nosy Be | Madagascar

Nosy Komba, the island of lemurs, certainly lives up to its name. This volcanic island lying between Nosy Be and the main island of Madagascar is named after the komba – Malagasi for black lemur or maki macaco – that inhabit its thick forest. Visit the Black Lemur Sanctuary, a small park run by the village to see the playful black lemur.

#### Optional

**Stepping Out**    
Zodiac Snorkelling

# Extraordinary Southern Africa

📅 6 - 13 Nov 2024 🏠 SH Diana  
📍 Maputo - Cape Town 🗓️ 7 nights

Discover the best of South Africa on an inspiring 7-night expedition along the Indian Ocean. Leaving Mozambique's culture-packed capital city, Maputo, your first venture on South African shores will be to the lively port town of Richards Bay. With wonderful beaches, extensive wetlands and a large lagoon – home to hippos and crocodiles – there's something for everyone to explore. Then it's time to visit big game reserves to spot rhinos, cheetahs and elephants roaming in the wild. Finishing in the cosmopolitan city of Cape Town, this is a transatlantic voyage you'll never forget.



## 5 Unmissables

- 🚢 Take a traditional dhow ride along the shore and discover the history of these long slim sailing boats.
- 🌿 Stroll through Durban's peaceful Botanical Gardens, famous for its spectacular orchid and palm collections.
- 🦏 Visit Addo Elephant National Park for a guided game drive, which offers thrilling encounters with the world's largest land mammal.
- 🌊 Sail into cosmopolitan Cape Town, set against the dramatic backdrop of Table Mountain. Take in the views of this picturesque coastal city from the vantage point of the bay.
- 🐠 Snorkel through the vibrant waters of Cape Vidal, looking out for the many species of colourful tropical fish and gentle sea turtles.



### ON THE RIVER

Built in an old quarry site on the banks of the Umgeni River, Durban's Umgeni River Bird Park is home to around 200 species



### GOLDEN MILE

Take a rickshaw ride along Durban's wide seafront promenade, known as the Golden Mile



### Day Visiting

- 1 Maputo
- 2 Portuguese Island
- 3 Richards Bay
- 4 Durban
- 5 At Sea
- 6 Port Elizabeth
- 7 Mossel Bay
- 8 Cape Town

Ports, port order and itinerary duration may vary, for the most up-to-date details see swanhellenic.com

→ Starting from € 7,538 per person in double Oceanview Stateroom occupancy



transfer airport/hotel



one night pre-cruise



transfer hotel/port



cruise



transfer port/airport

## Extraordinary Encounters



Set in 6,500 hectares of stunning wilderness, Pumba Private Game Reserve is home to some of Africa's most iconic and beloved wildlife. Alongside the 'Big Five' (lions, elephants, leopards, buffalo and rhino), hyena, cheetah, hippo, giraffe, zebra and over 300 bird species can be found here. The reserve is also home to a pride of rare white lions.

In addition to its rich and diverse wildlife, Pumba also boasts a range of stunning landscapes, including savannahs, wetlands, and forests. With its rolling hills, sparkling rivers, and towering mountains, Pumba is a photographer's paradise.

Explore the park in the company of the people who know this land like no one else, the local park rangers. Embark on game drives and guided bushwalks, create memories that will last a lifetime and experience nature in its rawest form.

Elephants, Pumba Private Game reserve

## Live it!

### Durban City Tour Durban | KwaZulu-Natal

Take in this sub-tropical city's diverse cultural influences from the comfort of an air-conditioned coach. This half-day tour reveals landmarks and panoramic views, along with a stop to explore Durban Botanical Gardens, and a trip to the Victoria Street Market, to browse aromatic spice stalls, exotic ornaments and wooden carvings.

#### Included

### Pumba Private Game Reserve Visit Port Elizabeth | Makana Municipality

Spend a full day at Pumba Private Game Reserve. The first of the Eastern Cape Game reserves to introduce a white lion breeding program, Pumba offers guests the chance of spotting the Big Five in their natural environment. After refreshments, you'll head out on a game drive with rangers, and experience the thrill of spotting free roaming wildlife in their natural habitat.

#### Optional

## Stepping Out



Zodiac

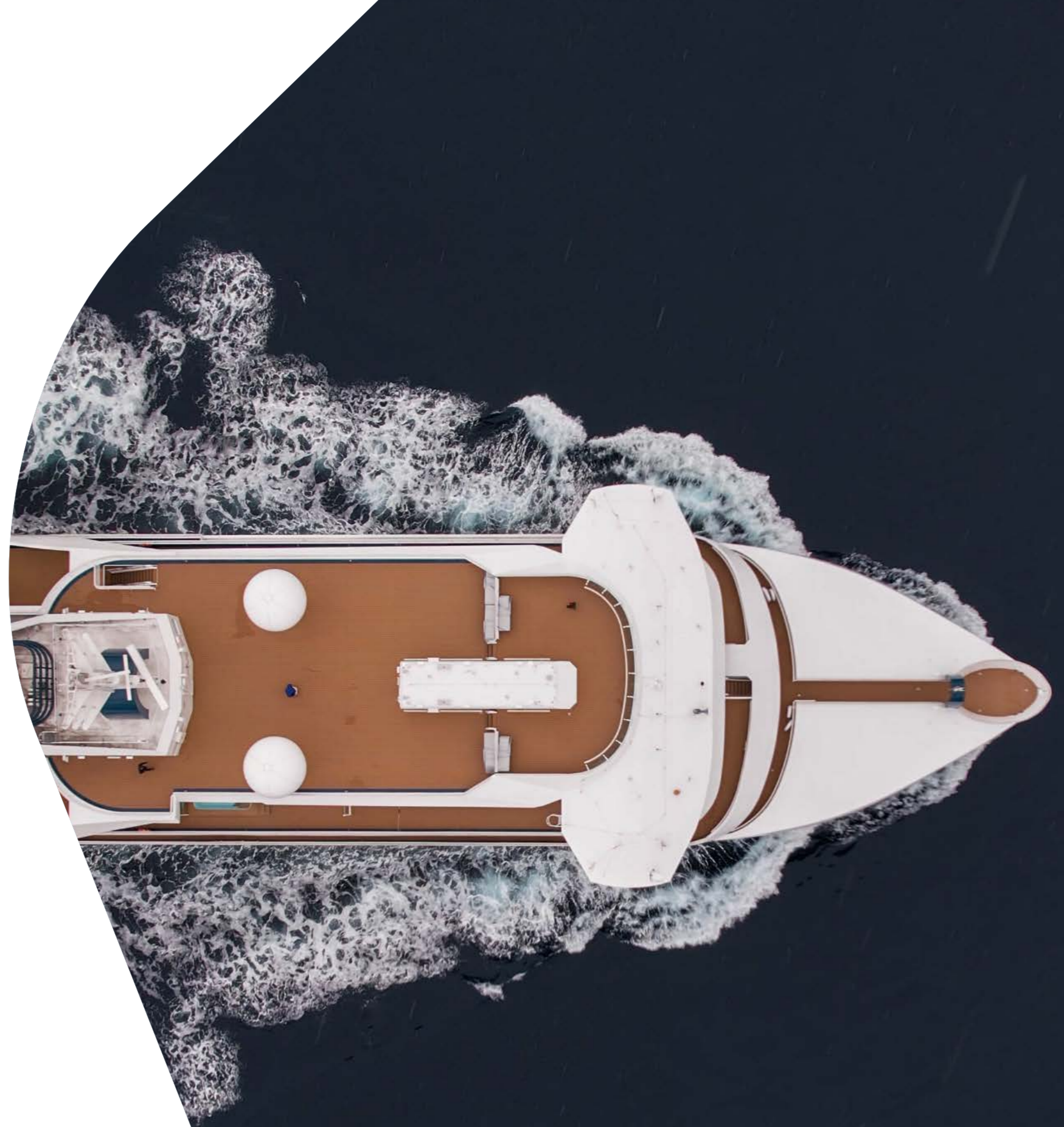


White lions at Pumba Private Game reserve

# A new class of exploration

Immerse yourself in breathtaking panoramic views, elegant interiors, and sophisticated onboard facilities.

Our fleet of 5-star boutique ships — SH Minerva, SH Vega and SH Diana — have taken expedition cruising to new heights. Built in the Helsinki Shipyard in Finland, these ships combine the latest in expedition technology with stylish, sophisticated design. Featuring elegant interiors, wide unobstructed views throughout the ship and dedicated expedition facilities for a remarkable travel experience. Explore off-the-beaten-track destinations in style and comfort as you take in the scenery from a panoramic sauna, warm up in an outdoor hot tub, dine in a world-class restaurant, and unwind in an elegant stateroom. This is boutique cruising at its finest.






SH Vega

# Boutique cruising at its finest



SH Minerva, SH Vega, and SH Diana are sister ships designed to navigate the most inspiring, inaccessible places on earth. All the while offering guests an immersive, 5-star experience.



## SH Minerva & SH Vega

-  120 crew
-  150 guests
-  9 decks

## SH Diana

-  141 crew
-  192 guests
-  9 decks

Our heated outdoor pool

The interiors are spacious and tasteful, with plush furnishing and floor-to-ceiling windows that give you unobstructed views of some of the most incredible landscapes in the world. On board, savour international cuisine imagined by renowned chefs, unwind in a sophisticated stateroom and make full use of state-of-the-art spa, fitness and expedition facilities.



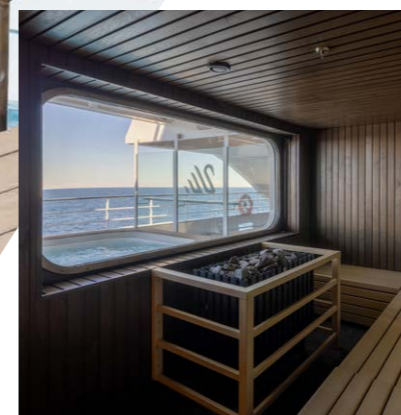
### The Swan Restaurant

As the main venue for breakfast, lunch and dinner, our 152-seat restaurant serves international and local cuisine focussed on quality regional ingredients from the unique destinations we visit.



### Club Lounge

Vibrant and welcoming, The Club Lounge acts as a hub, combining 24 hour tapas inspired dining with panoramic views of the ocean glittering below.



### Sauna with a View

Head to Deck 8 for the best views in the world. After a work out in our state-of-the-art gym, relax in our sauna or jacuzzi and take in those breathtaking vistas along the way.



### Observation Lounge

After a day of exploration, where better to relax than in the Observation Lounge? Sit back, savour your favourite tittle whilst getting to know your fellow guests.

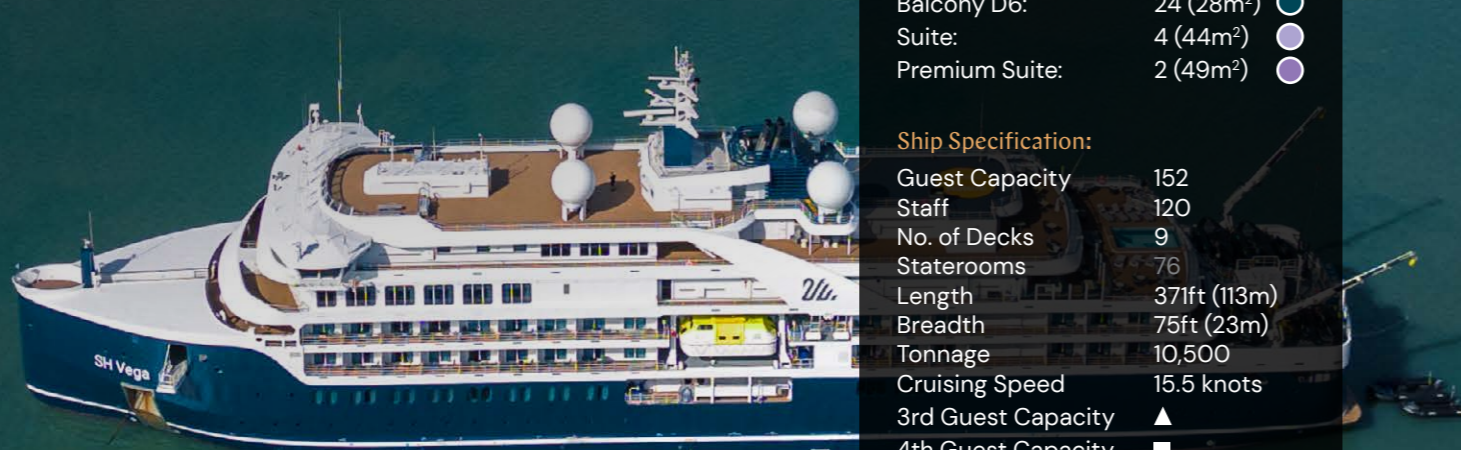


### Alfresco Dining & Heated Outdoor Pool

On Deck 7, you'll find a heated outside pool along with pool side seating from where you can enjoy stunning scenery.

# SH Vega

Our elegant 5-star ships offer a boutique home-from-home. With a chic Scandinavian-inspired design and world-class technology, you'll experience an expedition cruise like no other.

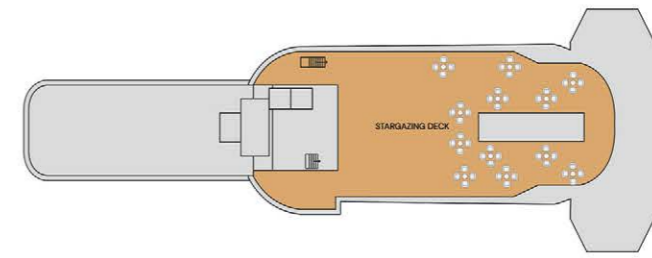


**Stateroom Category:**

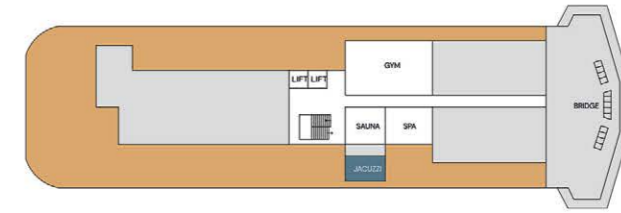
- Oceanview D4: 4 (19m<sup>2</sup>) ●
- Oceanview M4: 12 (19m<sup>2</sup>) ●
- Balcony D5: 8 (28m<sup>2</sup>) ●
- Balcony M5: 22 (28m<sup>2</sup>) ●
- Balcony D6: 24 (28m<sup>2</sup>) ●
- Suite: 4 (44m<sup>2</sup>) ●
- Premium Suite: 2 (49m<sup>2</sup>) ●

**Ship Specification:**

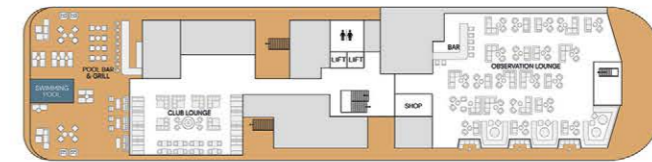
- Guest Capacity 152
- Staff 120
- No. of Decks 9
- Staterooms 76
- Length 371ft (113m)
- Breadth 75ft (23m)
- Tonnage 10,500
- Cruising Speed 15.5 knots
- 3rd Guest Capacity ▲
- 4th Guest Capacity ■
- Connecting Staterooms ↔
- Wheelchair Accessible Staterooms ♿ 415
- Propulsion Hybrid Diesel Electric, Polar Class PC5
- Registered Panama
- Lifeboats 2
- Zodiacs 11 MK V, 2 MK VI



**Deck 9**  
Stargazing Deck



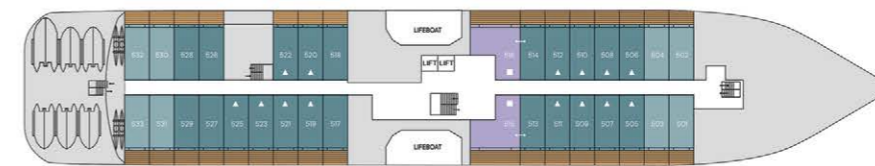
**Deck 8**  
Gym  
Sauna  
Jacuzzi  
Spa  
Bridge



**Deck 7**  
Shop  
Swimming Pool  
Pool Bar & Grill  
Club Lounge  
Observation Lounge



**Deck 6**  
Premium Suites  
Suites  
Balcony Staterooms D6  
Swan's Nest



**Deck 5**  
Balcony Staterooms D5, M5  
Suites



**Deck 4**  
Reception  
Laundrette  
Swan Restaurant  
Oceanview Staterooms D4, M4



**Deck 3**  
Clinic  
Library  
Basecamp  
Beauty Salon  
Expedition Lab

# SH Diana

The largest 5-star ship in our fleet, SH Diana (named after the Roman goddess of light, the moon, hunting and the wilderness) is elegant, spacious and built to explore the Mediterranean's famous sites of antiquity and beyond.



The Swan's Nest, on board SH Diana

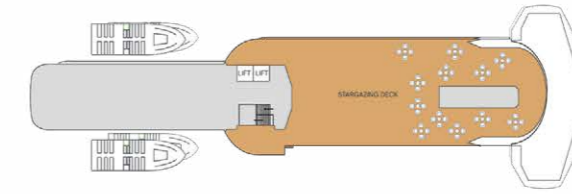
**Stateroom Category:**

- Oceanview: 20 (20m<sup>2</sup>) ●
- Balcony: 66 (28m<sup>2</sup>) ●
- Junior Suite: 4 (35m<sup>2</sup>) ●
- Suite: 4 (44m<sup>2</sup>) ●
- Premium Suite: 2 (47m<sup>2</sup>) ●

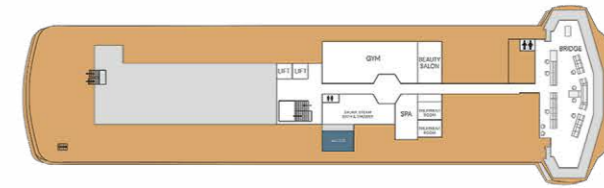
**Ship Specification:**

- Guest Capacity: 192
- Staff: 141
- No. of Decks: 9
- Staterooms: 96
- Length: 410 ft (125m)
- Breadth: 75 ft (23m)
- Tonnage: 12,100 GRT
- Cruising Speed: 14.5 knots
- Propulsion: Hybrid Diesel Electric, Polar Class PC6
- Registered: Malta
- Lifeboats: 2
- Tender: 2
- Zodiacs: 13 MK V, 2 MK VI

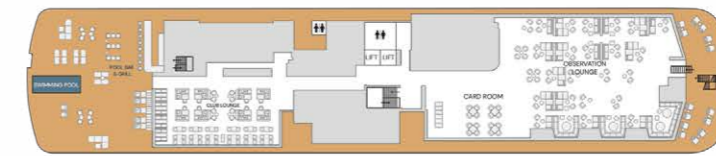
Accessible Staterooms: 419 (Deck 4), 635 (Deck 6)



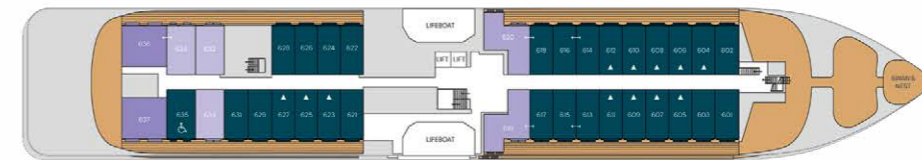
**Deck 9**  
Stargazing Deck



**Deck 8**  
Gym  
Sauna  
Jacuzzi  
Spa  
Beauty Salon  
Bridge



**Deck 7**  
Swimming Pool  
Pool Bar & Grill  
Club Lounge  
Card Room  
Observation Lounge



**Deck 6**  
Premium Suites  
Suites  
Junior Suites  
Balcony Staterooms  
Swan's Nest



**Deck 5**  
Balcony Staterooms  
Junior Suites  
Suites



**Deck 4**  
Swan Restaurant  
Reception  
Oceanview Staterooms  
Launderette



**Deck 3**  
Marina Deck  
Zodiac Boarding  
Basecamp  
Library  
Expedition Lab  
Clinic  
Laundry

# Your home away from home

Relax in the understated elegance of your stateroom or suite. A sophisticated blend of muted tones, natural textures and intuitive technology, the Scandi-inspired design seamlessly blends the natural world with 5-star comforts. The variety of lighting options and crackling holographic fire offer the perfect option for cozy evenings, and the floor to ceiling windows and balcony doors ensure that no sunset or surprise sighting goes unmissed.

## Your perfect space

Each of our beautifully designed staterooms has everything you need for a pampered stay. Fluffy dressing gowns, spacious dressing and seating areas and ample storage, as well as a well-stocked minibar and a personal safe. The desk in your room is the perfect place to plan the next day's adventures, and you won't miss a wildlife sighting with your Nikon telescope. Glass-enclosed rain showers with luxury personal care products transform your ensuite into a personal spa.



Onboard stateroom suite. Suite sizes and categories vary by ship

### Amenities in your cabin

- Welcome Champagne bottle
- Snacks
- Stocked minibar with soft drinks and beer
- Illy Espresso coffee machine with coffee pads
- Tea Kettle and Kusmi tea bags
- TV service
- Free Wi-fi connection, subject to satellite reception
- Hair dryer
- Towels for cabin, swimming pool and gym
- Bathrobe
- Bedroom slippers
- High quality toiletries by Lajatica, custom made for our selection onboard. These include hand soap, shower gel, shampoo, conditioner and body lotion.



**Premium Suite**  
49m<sup>2</sup> (528ft<sup>2</sup>) | Sleeps 4

Premium Suites feature a king size bed and separate living room with a soothing, flame-effect fireplace, a luxurious ensuite bathroom with separate bath tub and walk-in shower, a spacious walk-in wardrobe and a 12m<sup>2</sup> (129ft<sup>2</sup>) private balcony.



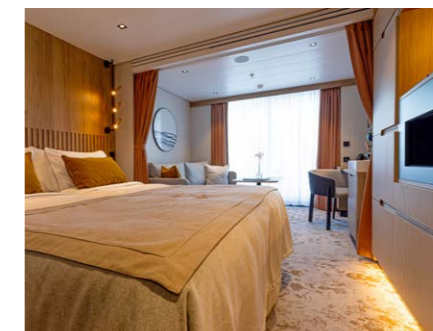
**Suite**  
44m<sup>2</sup> (474ft<sup>2</sup>) | Sleeps 4

Suites feature a king size bed and separate living room with a soothing flame-effect fireplace, a luxurious ensuite bathroom with separate bath tub and walk-in shower and a 12m<sup>2</sup> (129ft<sup>2</sup>) private balcony.



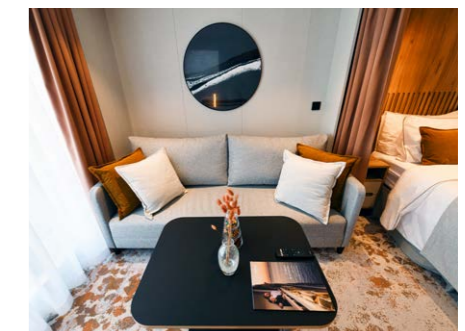
**Junior Suite (only on SH Diana)**  
35m<sup>2</sup> (377ft<sup>2</sup>) | Sleeps 2/3

Features a king size bed, separate living room area with homely flame-effect fireplace, private kitchen, luxurious en-suite bathroom and a 7 sq. m private balcony.



**Balcony**  
28m<sup>2</sup> (302ft<sup>2</sup>) | Sleeps 2/3

Balcony Staterooms feature two single beds or a double bed bedroom with living room area, a luxurious bathroom and your own private 6m<sup>2</sup> (65ft<sup>2</sup>) balcony.



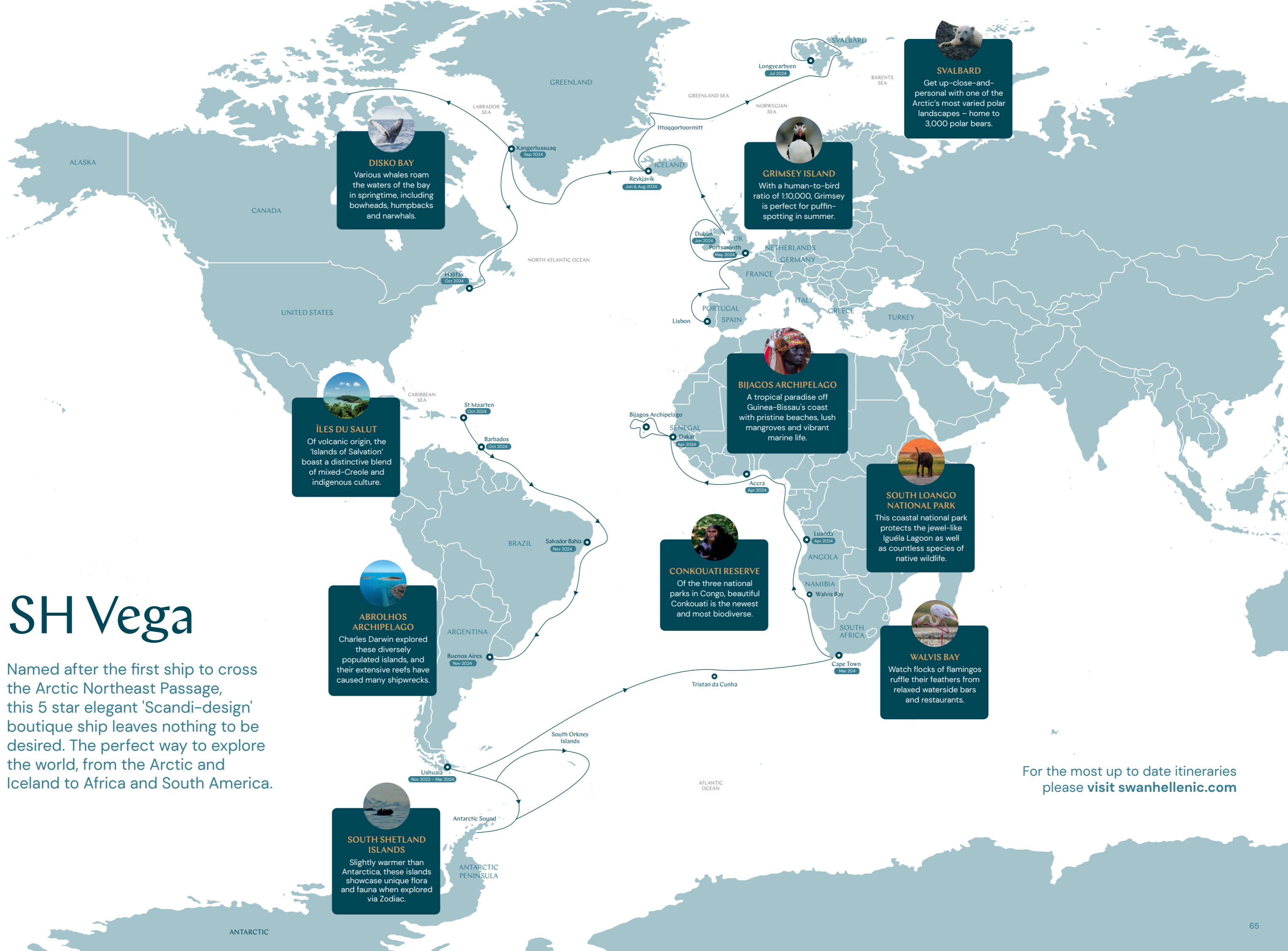
**Oceanview**  
19m<sup>2</sup> (205ft<sup>2</sup>) | Sleeps 2

Oceanview Staterooms feature two single beds or a double bed with living room area and a luxurious bathroom.



# SH Vega

Named after the first ship to cross the Arctic Northeast Passage, this 5 star elegant 'Scandi-design' boutique ship leaves nothing to be desired. The perfect way to explore the world, from the Arctic and Iceland to Africa and South America.



**DISKO BAY**  
 Various whales roam the waters of the bay in springtime, including bowheads, humpbacks and narwhals.

**SVALBARD**  
 Get up-close-and-personal with one of the Arctic's most varied polar landscapes – home to 3,000 polar bears.

**GRIMSEY ISLAND**  
 With a human-to-bird ratio of 1:10,000, Grimsey is perfect for puffin-spotting in summer.

**ÎLES DU SALUT**  
 Of volcanic origin, the 'Islands of Salvation' boast a distinctive blend of mixed-Creole and indigenous culture.

**BIJAGOS ARCHIPELAGO**  
 A tropical paradise off Guinea-Bissau's coast with pristine beaches, lush mangroves and vibrant marine life.

**SOUTH LOANGO NATIONAL PARK**  
 This coastal national park protects the jewel-like Iguéla Lagoon as well as countless species of native wildlife.

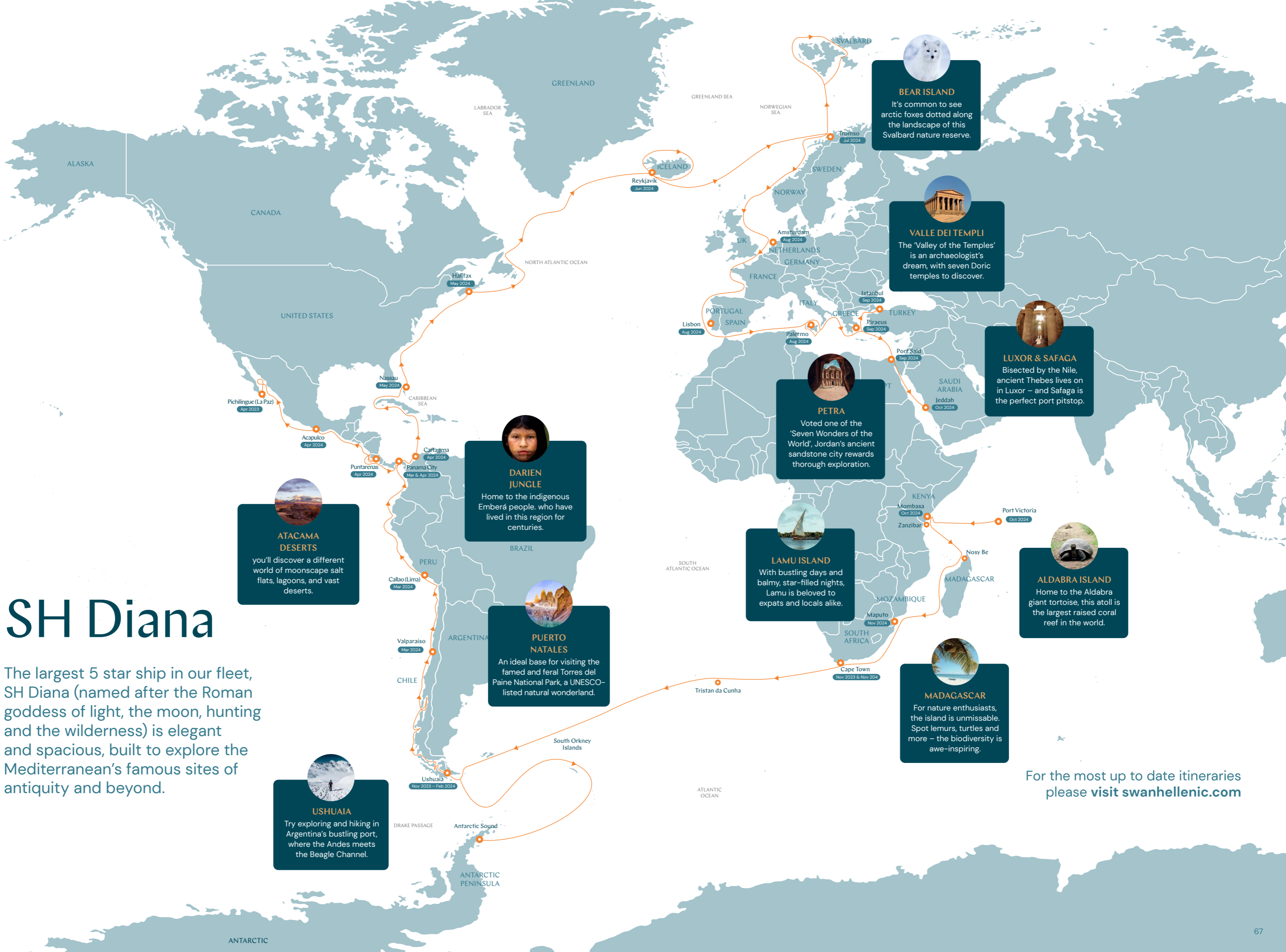
**ABROLHOS ARCHIPELAGO**  
 Charles Darwin explored these diversely populated islands, and their extensive reefs have caused many shipwrecks.

**CONKOUATI RESERVE**  
 Of the three national parks in Congo, beautiful Conkouati is the newest and most biodiverse.

**WALVIS BAY**  
 Watch flocks of flamingos ruffle their feathers from relaxed waterside bars and restaurants.


**SOUTH SHETLAND ISLANDS**  
 Slightly warmer than Antarctica, these islands showcase unique flora and fauna when explored via Zodiac.

For the most up to date itineraries please visit [swanhellenic.com](http://swanhellenic.com)



# SH Diana

The largest 5 star ship in our fleet, SH Diana (named after the Roman goddess of light, the moon, hunting and the wilderness) is elegant and spacious, built to explore the Mediterranean's famous sites of antiquity and beyond.



**USHUAIA**  
Try exploring and hiking in Argentina's bustling port, where the Andes meets the Beagle Channel.



**ATACAMA DESERTS**  
you'll discover a different world of moonscape salt flats, lagoons, and vast deserts.



**DARIEN JUNGLE**  
Home to the indigenous Emberá people, who have lived in this region for centuries.




**PUERTO NATALES**  
An ideal base for visiting the famed and feral Torres del Paine National Park, a UNESCO-listed natural wonderland.



**BEAR ISLAND**  
It's common to see arctic foxes dotted along the landscape of this Svalbard nature reserve.



**VALLE DEI TEMPLI**  
The 'Valley of the Temples' is an archaeologist's dream, with seven Doric temples to discover.



**LUXOR & SAFAGA**  
Bisected by the Nile, ancient Thebes lives on in Luxor – and Safaga is the perfect port pitstop.



**PETRA**  
Voted one of the 'Seven Wonders of the World', Jordan's ancient sandstone city rewards thorough exploration.



**LAMU ISLAND**  
With bustling days and balmy, star-filled nights, Lamu is beloved to expats and locals alike.



**ALDABRA ISLAND**  
Home to the Aldabra giant tortoise, this atoll is the largest raised coral reef in the world.



**MADAGASCAR**  
For nature enthusiasts, the island is unmissable. Spot lemurs, turtles and more – the biodiversity is awe-inspiring.

For the most up to date itineraries please visit [swanhellenic.com](http://swanhellenic.com)

# Book your cultural expedition cruise

Nautical adventurers have been drawn to Africa for millennia and the mysteries of this continent are still attracting explorers today. Visit some of the least-visited parts of Africa as you discover local customs and culture, experience rare, exotic wildlife, and immerse yourself in ancient, natural beauty and exclusive activities.

Join the inquisitive voyagers that came before you and awaken your inner adventurer on a unique expedition along the inspiring African coast.



# Terms & Conditions

Please read these travel conditions carefully before booking your package tour, because you accept them as binding with your booking.

The following terms and conditions apply to all bookings and, where effectively agreed, govern the contractual relationship between you and Swan Hellenic Travel Ltd. (hereinafter referred to as "Swan Hellenic Travel") in addition to the legal provisions of EU Package Travel Directive respectively the national law implementation of named directive – as here i.e. the Cyprus implementation as "The Package Travel and Linked Travel Arrangements Law Number 186(I) of 2017, or respectively the applicable transition of EU directive 2015/2302 into national law for your country, where the travel modules are offered. The travel conditions supplement and complete these. Before concluding a package tour contract, we must inform you about the details of your cruise package tour, which are substantial, as well as about your rights under EU Directive 2015/2302. You can find the information on your package tour in the general and specific service descriptions of our tours and these travel conditions. In addition to your rights under EU Directive 2015/2302, we have included the required form on our website, in your travel agency and in the booking systems in which our trips can be booked. In addition, the General Conditions of Carriage of Passengers and their Luggage by Sea of the Carrier/Shipping Company (conditions of carriage) and the Conditions of Carriage of the Operating Carrier for regular scheduled flights with international airlines apply to flight services. These conditions are available from your travel agent or on request from our call center.

We would like to point out that tour operator within the meaning of the applicable statute as transitional definition of the named EU directive – in the Cyprus "The Package Travel and Linked Travel Arrangements Law 186 (I) of 2017 is exclusively Swan Hellenic Travel Ltd., for all trips offered on the website.

The term "customer" is used below to refer to our contractual partner and the term "traveller" to refer to those persons who actually commence the journey.

We recommend every traveller to take out a travel cancellation insurance, travel interruption insurance and a travel health insurance policy with assumption of the return transport costs of repatriation.

## PERSONAL REQUIREMENTS OF THE TRAVELLER

The customer assures that the travellers are fit to travel. Swan Hellenic Travel has the right to demand a medical certificate from the customer stating that the travellers are fit to travel. Persons under 18 years of age may only take part in a journey when accompanied by a person 18 years of age or older. Swan Hellenic Travel cannot guarantee the necessary medical care for children. Children under the age of 8 are not eligible for Swan Hellenic Cruises. Unfortunately, women who will enter the 24th week of pregnancy by the end of their booked cruise cannot take part in such a cruise.

## 1. REGISTRATION AND CONCLUSION OF THE TRAVEL CONTRACT

- 1.1 With the booking (travel registration) the customer bindingly offers Swan Hellenic Travel the conclusion of a travel contract and at the same time confirms to Swan Hellenic Travel the knowledge of the above mentioned pre-contractual information. Registration is possible in writing, by fax or electronically, in exceptional cases also by telephone. It is made by the applicant also for all participants listed in the registration. The basis of this offer is the travel advertisement with all information contained therein, in particular also with regard to offered flight services, as well as these travel conditions.
- 1.2 The package travel contract is concluded exclusively with the written travel confirmation or invoice by Swan Hellenic Travel. The electronic confirmation of receipt of the travel registration as well as a booking form signed at the travel agency, if applicable, do not constitute acceptance of the travel contract. If the travel confirmation is made immediately after pressing the button "Book Now" by the immediate display of the travel confirmation on the screen, the package travel contract is concluded with the display of this travel confirmation. Swan Hellenic Travel is not obliged in case of non-acceptance of the travel request to expressly declare non-acceptance and/or to justify non-acceptance to the customer.
- 1.3 The customer is responsible for all contractual obligations of fellow travellers for whom he makes the booking as for his own, provided that he has assumed this obligation by express and separate declaration.
- 1.4 If the content of the travel confirmation deviates from the content of the registration, Swan Hellenic Travel shall be bound to this new offer for 7 days. The travel contract is concluded on the basis of the new offer if the customer accepts the offer by express declaration, down payment, payment of the balance or commencement of travel within the specified period. According to the legal regulations for cruise package contracts concluded at a distance (e.g. via letters, telephone calls, e-mails, telemedia or online services), there is no right of rescission, but only the legal right of withdrawal and cancellation. However, a right of cancellation exists if the contract for travel services has been concluded outside business premises, unless the negotiations on which the conclusion of the contract is based were based on a previous order by the consumer; in the latter case there is no right of rescission.

## 2. PAYMENT

- 2.1 Swan Hellenic Travel and travel agents may only demand or accept payments on the travel price before the end of the trip, if the security note/ bonding information has been handed over to the customer. After conclusion of the contract, a down payment of 15% of the cruise package price is due upon handing over of the security certificate. The remaining payment is due 60 days before the start of the trip, provided that the security note has been handed over. 2.1 If the customer does not make the down payment and/or the balance payment in accordance with the agreed payment due dates, and if Swan Hellenic Travel is willing and able to properly provide the contractual services, has fulfilled the statutory information obligations and no legal or contractual right of retention exists on your part, Swan Hellenic Travel shall be entitled, in the event of non-performance of the down payment, to withdraw from the package cruise package contract after issuing a reminder setting a deadline and to charge you with the costs of withdrawal in accordance with section 4.2 sentences 2 to 4.4. If the agreed cruise package price has not been paid in full by the due date, Swan Hellenic Travel shall be entitled to terminate the package cruise package contract and to claim damages in the amount of the corresponding cancellation fees, provided that there was not already at that time a package cruise package deficiency justifying cancellation. Swan Hellenic Travel shall be entitled to claim damages for non-performance under the conditions of Cyprus Law or similar national law statutes. If you have booked your trip only 60 days before the start of the trip or later, full payment must be made immediately after receipt of the travel confirmation with security note/ bonding information. With the travel confirmation/ invoice you will receive a security note based on the local law requirements. Swan Hellenic Travel has taken out insolvency bonding according to ACTA Briefing for all cruise only bookings and for all Flight inclusive cruise packages to secure your customer deposits and full payments. The respective local security note securitizes a direct claim against the bonding organization in the event of insolvency of Swan Hellenic Travel and it's address is sent to you with the travel confirmation.

## 3. CHANGES IN PERFORMANCE

- 3.1 The offers and information on the scope of the contractual travel services on our website correspond to the status at the time of publication. The travel prices are based on the current rates of carriage and exchange rates applicable at the time of the travel advertisement. Until the customer's booking request has been transmitted, however, changes to the services/ the scope of services/ the ship route/ the arrival and departure modalities are possible for objectively justified reasons, which is why Swan Hellenic Travel expressly reserves this right. Swan Hellenic Travel will of course inform the customer of these changes prior to the conclusion of the contract or prior to the submission of its binding contractual offer.
- 3.2 Swan Hellenic Travel expressly reserves the right to deviations and changes of individual travel services from the contractually agreed content of the package travel contract, which become necessary after conclusion of the contract, as far as these changes are insignificant according to EU Package Travel Directive in the Cypriot transition or the respective national law statutes in your country where the travel modules are offered. In the case of cruises, changes to the itinerary are possible at any time, e.g. due to official regulations, special circumstances of shipping traffic, medical emergencies, or if a different itinerary becomes necessary in the interest of the safety of the passengers or for weather reasons or related to national or international

epidemic or pandemic rules. The captain responsible for the ship shall decide on such changes to the itinerary and/or travel and layover times that become necessary after conclusion of the contract.

- 3.3 Any warranty claims shall remain unaffected if the changed services are defective.
- 3.4 Swan Hellenic Travel is obliged to inform the customer of significant changes to the contract immediately after becoming aware of the reason for the change.
- 3.5 If Swan Hellenic Travel is only able to provide the booked trip due to a circumstance occurring after conclusion of the contract under significant change of one of the essential characteristics of the travel service, or only under deviation from a contractual agreement made separately between Swan Hellenic Travel and the customer, Swan Hellenic Travel shall be entitled to offer the customer a corresponding contractual change as new offer before commencement of the trip, or optionally also participation in another trip (substitute trip). In such a case, the customer shall have the right to withdraw from the booked trip without payment of compensation, to demand participation in a substitute trip or to accept the new offer to change the contract within 7 days of receipt of our notification of change with the new offer. Swan Hellenic Travel shall expressly inform the customer of this period in the notification of change. Therefore, the offered new contract shall be deemed accepted if the customer does not inform Swan Hellenic Travel within this set period that he wishes to withdraw from the cruise package contract free of charge or demands participation in a substitute cruise package offered. The new offered service shall replace the service originally owed under the contract. Any warranty claims remain unaffected if the new service is defective.

## 4. CANCELLATION BY THE CUSTOMER BEFORE COMMENCEMENT OF TRAVEL/ CANCELLATION COSTS

- 4.1 The customer can withdraw from the trip at any time before the start of the trip. Cancellation must be made to Swan Hellenic Travel at the address given below. If the trip was booked through a travel agency, the withdrawal can also be declared to this agency. The customer is recommended to declare the cancellation in writing. The date of receipt by Swan Hellenic Travel or the respective travel agency of the notice of withdrawal shall be decisive for the date of withdrawal.
- 4.2 If the customer withdraws before the start of the trip or does not commence the trip, Swan Hellenic Travel loses its claim to the travel price. Swan Hellenic Travel may instead demand reasonable compensation insofar as Swan Hellenic Travel is not responsible for the cancellation or insofar as extraordinary circumstances do not occur at the place of destination or its immediate vicinity which considerably impair the performance of the journey or the carriage of persons to the place of destination; circumstances are unavoidable if they are not subject to the control of Swan Hellenic Travel and their consequences could not have been avoided even if all reasonable precautions had been taken.
- 4.3 The amount of the compensation shall be determined by the travel price less the value of the expenses saved by Swan Hellenic Travel and less what Swan Hellenic Travel acquires through other use of the travel services, which shall be justified by Swan Hellenic Travel at the customer's request. Swan Hellenic Travel has determined the following compensation level schedule taking into account the period between the notice of withdrawal and the commencement of the journey as well as the expected savings of expenses and the expected acquisition through other use of the travel services. The compensation will be calculated as follows with the respective cancellation scale after the date of receipt of the notice of cancellation:

The following cancellation fees apply to all other trips, with the exception of Special Cruise Itineraries:

- A USD 300/ EUR 300/ GBP 300/ CAD 300.00/ AUD 300/ NZD 300 administrative fee is assessed for all cancellations up to 120 days before cruise departure.
- For cancellations 119-60 days prior to departure: 15% of the cruise package price;
- For cancellations 59-30 days prior to departure: 75% of the cruise package price;
- For cancellations 29 days prior to departure: 100% of the cruise package price

In the case of flight tickets for special price conditions which are booked in addition to the cruise arrangement, 100% of the net ticket price will be charged as cancellation fees in the event of cancellation or no show, taxes and fees on the flight ticket will be refunded.

- 4.4 In any case, the customer is at liberty to prove to Swan Hellenic Travel that Swan Hellenic Travel has incurred no damage at all or substantially less damage than the cancellation level demanded by it.
- 4.5 Swan Hellenic Travel reserves the right to demand a higher, concrete compensation instead of the aforementioned cancellation level if Swan Hellenic Travel proves that it has incurred significantly higher expenses than the applicable cancellation level. In this case, Swan Hellenic Travel shall be obliged to quantify and substantiate the claimed compensation taking into account the saved expenses and any other use of the travel services.
- 4.6 The statutory right of the customer to demand from Swan Hellenic Travel in accordance with EU Package Travel Directive in the Cyprus Transition or the respective national law statutes, in your country where the travel modules are offered that a third party takes over the rights and obligations arising from the package travel contract instead of him shall remain unaffected by the above conditions. Until the start of the trip, i.e. taking into account a reasonable period of time for organisational measures which must be reasonable for Swan Hellenic Travel, the customer may demand that a third party takes his place in the rights and obligations arising from the package travel contract. Swan Hellenic Travel may object to the entry of the third party if the third party does not meet the special travel requirements or if its participation is contrary to statutory regulations or official orders. If a third party enters into the contract, he and the customer shall be jointly and severally liable to Swan Hellenic Travel for the travel price and the additional costs incurred as a result of the entry of the third party, in particular for changing the flight tickets and

fees of the respective service providers.

We charge handling fees of €/GBP/USD 50.00 for the transfer of the contract to a substitute person (plus any fees charged by third parties – in particular airlines).

Declarations of withdrawal, rebooking and changes should be made in writing in the interest of the customer and for reasons of proof.

## 5. REBOOKING

- 5.1 If a customer wishes to rebook for another trip, he should ask Swan Hellenic Travel to clarify whether the request can be met. There is no legal right to rebooking. This does not apply if the rebooking is necessary because Swan Hellenic Travel has not provided the traveller with any, insufficient or incorrect pre-contractual information in accordance with EU Package Travel Directive in the Cyprus transition or the respective national law statutes, in your country where the travel modules are offered; in this case the rebooking is possible free of charge. Otherwise, rebooking is only possible if the rebooking takes place on a trip that begins within six months of the original departure date and is more expensive. Changes can only be made up to 61 days before departure and will only be permitted once. In contrast, changes that only relate to individual travel services (e.g. hotel or flight) as well as pure name corrections that do not represent a change of person are possible at any time before departure. When registering your trip, Swan Hellenic Travel must have your full name with all first names and surnames and the names of all registered travellers congruent with your valid passport. After Swan Hellenic Travel has confirmed the trip, name changes are only permitted for a handling fee of €/GBP/USD/AUD 50.00 per person. Name changes on scheduled flights are only possible in exceptional cases and on request; Swan Hellenic Travel charges a name change fee in line with the conditions of carriage of and requested by the single airlines per person after the issue of the ticket. Depending on the availability of the airfields, additional surcharges may apply. Pure name corrections in case of incorrect spelling are free of charge. The customer will be charged EUR/GBP/USD/AUD 100.00 for rebookings and changes as well as fees charged by third parties (airlines fees excluded – see above). The advertised conditions apply to rebookings and new bookings; discounts and special conditions for the trip to be rebooked cannot be transferred.
- 5.2 Irrespective of this, each customer is free to withdraw from the originally booked trip under the cancellation conditions under Item 4.3 and to book a new trip. This is mandatory for each rebooking request 60 days or later to departure date.

## 6. SERVICES NOT USED

If the traveller does not make use of individual travel services which have been duly offered to him for reasons attributable to him (e.g. early return or other compelling reasons), he shall not be entitled to pro rata reimbursement of the travel price. Swan Hellenic Travel will endeavour to have the saved expenses reimbursed by the service providers. This obligation shall not apply if the services concerned are completely insignificant or if reimbursement is contrary to statutory or official provisions.

## 7. TERMINATION FOR REASONS OF CONDUCT OR UNAVOIDABLE, EXTRAORDINARY CIRCUMSTANCES

Swan Hellenic Travel may terminate the Travel Contract without notice if the Traveller

- a) he has not notified any unfitness to travel known to him before the start of the journey;
- b) knowingly misstated his age;
- c) is, in the judgement of the master or the ship's doctor, incapable of travelling because of illness, infirmity or any other cause i.e. pandemic suspect;
- d) is dependent on company, but travels unaccompanied;
- e) the performance of a voyage, notwithstanding a warning from Swan Hellenic Travel or the ship's management, causes lasting disruption or behaves in a manner contrary to the contract to such an extent that the immediate cancellation of the contract is justified;
- f) booked with false personal or nationality details;
- g) does not appear at the start of the journey within the check-in periods provided, or does not comply with the necessary travel regulations or does not carry the necessary travel documents, so that there is a risk that other passengers may not leave the ship for shore leave.
- h) carries weapons, ammunition, explosive or flammable substances and the like,
- i) consumes or carries drugs or commits criminal offences while travelling. A justified termination also exists in the case of an attempt of the aforementioned actions h) and i).
- j) is on corresponding anti-terror lists of the EU or OFAC.

If Swan Hellenic Travel terminates the contract, Swan Hellenic Travel retains the right to the travel price; however, Swan Hellenic Travel must allow itself to be credited with the value of the saved expenses as well as those benefits which Swan Hellenic Travel obtains from another use of the service not used, including the amounts credited to Swan Hellenic Travel by the service providers.

If Swan Hellenic Travel is prevented from carrying out and fulfilling the cruise package contract prior to commencement of travel due to unavoidable, extraordinary circumstances, Swan Hellenic Travel may declare its withdrawal from the contract to the customer immediately after becoming aware of the reason for withdrawal. Swan Hellenic Travel will then refund the paid travel price within 14 days. Swan Hellenic Travel reserves the right to demand reasonable compensation for travel services rendered or to be rendered.

On board there is an on-board regulation which must be observed and observed by the customer without restriction. The captain is responsible for the ship, the passengers and the crew. Within the framework of the seamanly conduct of the ship, the guarantee of safety, as well as with regard to the observance of the ship rules, the captain has the sole decision-making authority and is thus entitled to expel customers from the ship without compensation.

**8. WARRANTY / COOPERATION OBLIGATIONS OF THE TRAVELLER****8.1 Notification of defects;**

If the trip is not carried out in accordance with the contract, the traveller can demand remedy. To the extent that Swan Hellenic Travel was unable to remedy the defect due to a culpable omission of the notice of defects, the Traveller may neither assert claims for a reduction of the purchase price pursuant to EU Package Travel Directive in the Cyprus transition or the respective national law statutes, in your country where the travel modules are offered, nor claims for damages pursuant to damage of tort definition or the respective national law statutes, in your country where the travel modules are offered. Insofar as the notice of defects is not recognisably futile or unreasonable for other reasons, the traveller can immediately notify the cruise package guide at the holiday destination of this or on board the vessel. If a cruise package guide is not available on site, the customer may notify Swan Hellenic Travel of any travel defects at its registered office. The customer will be informed about the availability of the cruise package guide or of Swan Hellenic Travel in the service description, at the latest, however, with the travel documents. The cruise package guide shall be instructed to remedy the situation as far as this is possible. However, he is not authorized to recognize claims of the traveller. The customer can demand a reduction of the travel price corresponding to the reduced performance (i.e. regarding the Cyprus transition or the respective national law statutes, in the country where the travel modules are offered) if, despite his request for remedy (see 8.1), travel services or substitute services accepted by him were not provided in accordance with the contract.

**8.2 Deadline prior to termination;**

If a customer wishes to terminate the travel contract in accordance with EU Package Travel Directive in the Cyprus transition or the respective national law statutes, in your country where the travel modules are offered, due to a significant deficiency in travel as described in EU Package Travel Directive in the Cyprus transition or the respective national law statutes, in the country where the travel modules are offered, insofar as it is substantial, he must first set Swan Hellenic Travel a reasonable deadline for remedial action. This only does not apply if remedy is refused by Swan Hellenic Travel or if immediate remedy is necessary. If the cruise package is then significantly impaired as a result of the non-contractual provision of services, the customer may terminate the package cruise package contract. If the contract is cancelled thereafter, the customer shall retain the right to repatriation if the contract included repatriation. Swan Hellenic Travel shall bear the additional costs of the return transport. Cases of unforeseeable, extraordinary circumstances which do not affect any travel services provided by Swan Hellenic Travel do not entitle the customer to withdraw from the package travel contract free of charge.

The customer's request for remedy may also be addressed directly to Swan Hellenic Travel: Swan Hellenic Travel Ltd. www.swanhellenic.com, Phone +49 (0)211 1386 6123, E-mail: support@SwanHellenic.com

Authorised recipient and representative: Swan Hellenic Travel Ltd. UK Branch: 60 Petty France, London, SW1H 9EU

Swan Hellenic Travel Ltd. German Branch: Koenigsallee 14, Dusseldorf, 40212

The customer must note that in the case of reports to his travel agent outside his opening hours, a direct transfer to Swan Hellenic Travel for the speedy processing of the remedy request is not guaranteed.

If Swan Hellenic Travel culpably violates obligations arising from the package travel contract, Swan Hellenic Travel shall be obliged to compensate the customer for the resulting damage (based on EU package Travel Directive in the Cyprus transition or the respective national law statutes, in the country where the travel modules are offered). If the journey is thwarted or considerably impaired as a result, the customer may, if he has demanded unsuccessful remedy (see 8.1), also demand reasonable compensation in money for the useless holiday time spent. 8.3 Loss of baggage, damage to baggage and delay of baggage, Swan Hellenic Travel strongly recommends that damage or delays in delivery during air travel be reported immediately to the responsible airline at the airport by means of a Property Irregularity Report (PIR). Airlines usually refuse refunds if the damage report has not been completed. In case of damage to luggage, the damage report must be submitted within seven days and in case of delay within 21 days of delivery. Otherwise, the loss, damage or misrouting of baggage must be reported to the cruise package guide or the local representative of Swan Hellenic Travel. Damage to or loss of luggage during embarkation or disembarkation must be reported immediately. The customer is obliged to notify Swan Hellenic Travel or its agents in writing. If cabin baggage is visibly damaged, the customer must notify Swan Hellenic Travel of the damage immediately, at the latest, however, at the time of disembarkation. In the case of other, externally recognizably damaged luggage, which has been transported by the on-board personnel or stored for the customer, the customer must report the damage as soon as it is handed back to him. If the damage is not externally visible, the report must be made no later than 15 days after disembarkation, handover or the time at which handover was scheduled. The carriage, stowage and handling of the passenger's own luggage on board shall always be at the passenger's own risk. Cabin luggage damage is limited to a maximum liability amount of 2,250 units of account (unit of account is the special drawing right of the International Monetary Fund). The amount shall be converted into Euro/GBP/USD/AUD according to the value of the Euro/GBP/USD/AUD in relation to the Special Drawing Right, per customer and per trip, insofar as damage was neither intentionally nor grossly negligently caused by Swan Hellenic Travel. The limitation of liability shall also apply insofar as Swan Hellenic Travel is responsible for any damage incurred by the customer solely due to the fault of a service provider. In the event of loss of or damage to mobility equipment or other special equipment used by a passenger with reduced mobility, Swan Hellenic Travel shall reimburse the replacement value of the equipment concerned or, if applicable, the repair costs. (i.e. implementation of the EU Regulation 392/2009 or the respective national law statutes, in your country where the travel modules are offered).

**9. LIMITATION OF LIABILITY**

**9.1** The contractual liability of Swan Hellenic Travel for damages that do not result from injury to life, body or health (including liability for injury before, - in addition to, - or after contractual obligations) is limited to three times the cruise package price, in so far as damage to the customer is caused neither intentionally nor by gross negligence or in so far as Swan Hellenic Travel is responsible for any damage incurred by the customer solely due to the fault of a service provider. Any further claims based on international agreements shall remain unaffected by this limitation of liability.

For all claims for damages against Swan Hellenic Travel based on tort, which are not based on intent or gross negligence, the liability for property damage is limited to three times the travel price. These maximum liability sums apply per customer and trip.

Any further claims based on international agreements shall remain unaffected by this limitation of liability.

**9.2** If Swan Hellenic Travel is appointed as a contractual shipowner, liability shall be governed by the special international conventions or statutory provisions based on such conventions. Carriage by sea is subject to the liability provisions of the Athens Convention 1974 and the Protocol thereto 2002 as well as the IMO Reservation and the IMO Guidelines for the Implementation of the Athens Convention, which have been implemented in the European Community by Directive 392/2009 for the Carriage of Passengers by Sea. The exact limits of liability can be found here. The provisions of this paragraph shall not apply only if the provisions referred to in point 9.1 lead to a lesser claim on Swan Hellenic Travel. In this context, Swan Hellenic Travel draws attention to the following points in connection with the liability provisions for sea transport:

The liability of Swan Hellenic Travel for the loss of and damage to luggage, mobility aids and other special medical equipment used by customers and/or their fellow passengers with reduced mobility is excluded if the customer and/or fellow passenger does not notify Swan Hellenic Travel of the damage at the latest at the time of disembarkation or at the latest 15 days after disembarkation in the case of damage which is not recognisable. A written notification is not required if both parties have already jointly determined the damage within the period.

**c)** Swan Hellenic Travel is not liable for damage to or loss of personal equipment or valuables (e.g. money, important documents, precious stones, jewellery, works of art, dentures, photo and film cameras, smartphones, notebooks and tablet PCs including accessories, etc.) due to theft, other loss or other extreme influences, which are not attributable to intentional or grossly negligent conduct on the part of Swan Hellenic Travel, unless they were deposited for safekeeping during transport, e.g. in the reception safe.

**9.3** Swan Hellenic Travel is expressly not liable for service disruptions, personal injury and material damage in connection with services which are merely brokered as third-party services (e.g. excursions, sports events, visits to the theatre, exhibitions, transport services to and from the advertised place of departure and destination), all third-party services are clearly and identifiably marked as such and are therefore not part of the travel service to be provided by Swan Hellenic Travel within the scope of the travel contract.

**9.4** Swan Hellenic Travel has compiled an extensive shore excursion programme for the customer which in some illustrated cases is offered exclusively by carefully selected local organisers of the respective destination (port). Swan Hellenic Travel is only responsible for arranging these shore excursions, which are not organised, monitored or controlled by Swan Hellenic Travel. The shore excursion programme is provided by local tour operators who work independently of Swan Hellenic Travel. Organizers of shore excursions plan these in accordance with the lay times of the ship. Swan Hellenic Travel carries out the mediation of such external services as a pure service for the customer, but Swan Hellenic Travel is liable for errors in the mediation.

**9.5** Air carriage owed as part of a cruise package is subject to the liability provisions of the Montreal Convention of 1999, as amended by Regulation (EC) No 779/2002.

**9.6** Swan Hellenic Travel recommends that customers take out travel accident and luggage insurance in their own interest.

**10. LIMITATION PERIOD - INFORMATION ON CONSUMER DISPUTE SETTLEMENT**

**10.1** All contractual claims of the customer shall become statute-barred after two years. The claims for damages under maritime law due to death, damage to body or luggage become statute-barred after two years. Claims arising from tort shall become statute-barred within three years unless they also arise under the provisions of the Cyprus Commercial Code on maritime liability.

**10.2** The limitation period begins on the day on which the trip should end according to the contract. If the last day of the period falls on a Sunday, a public holiday recognised by the state at the place of declaration or a Saturday, the next working day shall take the place of such a day.

**10.3** If negotiations between the customer and Swan Hellenic Travel concerning the claim or the circumstances justifying the claim are pending, the statute of limitations shall be suspended until the customer or Swan Hellenic Travel refuses to continue the negotiations. The limitation period shall commence at the earliest three months after the end of the suspension.

**10.4** Swan Hellenic Travel operates a modern, fast and fair complaints management system. This is attainable for its customers under support@SwanHellenic.com. Swan Hellenic Travel does not take part in a consumer dispute settlement. If a consumer dispute resolution would become obligatory for Swan Hellenic Travel after printing of these trading conditions, Swan Hellenic Travel informs the consumers about it in suitable form. Swan Hellenic Travel refers to the European Online Dispute Resolution Platform for all contracts concluded in electronic legal transactions.

**11. OBLIGATIONS TO PROVIDE INFORMATION ON THE IDENTITY OF THE CARRIER UNDERTAKING PERFORMING THE CONTRACT**

The EU regulation on informing passengers of the identity of the operating airline obliges Swan Hellenic Travel to inform the customer of the identity of the operating airline of all air transport services to be provided within the scope of the booked journey at the time of booking. If the operating airline has not yet been determined at the time of booking, Swan Hellenic Travel is obliged to inform the customer of the airline or airlines that will probably operate the flight. As soon as Swan Hellenic Travel knows which airline will operate the flight, Swan Hellenic Travel will inform the customer. If the airline named to the customer as the operating airline changes, Swan Hellenic Travel will inform the customer of the change. Swan Hellenic Travel will immediately take all reasonable steps to ensure that the customer is informed of the change as soon as possible. The list of airlines banned from EU operations is available on the following website: [http://ec.europa.eu/transport/modes/air/safety/air-ban/index\\_de.htm](http://ec.europa.eu/transport/modes/air/safety/air-ban/index_de.htm)

**12. PASSPORT, VISA AND HEALTH REQUIREMENTS**

**12.1** The customer shall be informed about the entry regulations in the cruise brochure, in the travel advertisement, or in the Internet presence, in the online travel advertisements and in the "FAQ" in the travel catalogue or online, prior to the conclusion of the contract. He must observe the necessity of carrying valid identity documents, in particular a valid machine-readable passport (ePassport) and its period of validity. As a general rule, every passenger must carry a valid passport on the respective trip, which must be valid for at least 6 months after the end of the trip. On all journeys which exclusively call at ports in the EU as well as in Norway and Iceland, Schengen area citizens only require an identity card which is valid for at least 6 months after the end of the journey. All children require a children's passport for all trips to ports in the EU, Norway and Iceland up to the age of 14, otherwise a machine-readable passport (ePassport) which is valid for at least 6 months after the end of the trip. The entry of the child in the passport of a parent or guardian is no longer sufficient.

**12.2** Swan Hellenic Travel offers the trips in this travel catalogue or the corresponding website in all European EEA countries and worldwide, Swan Hellenic Travel will therefore inform its local customers about the provisions of passport, visa and health regulations for the respective travel countries of the cruise or trip prior to conclusion of the contract and about any changes to such provisions prior to commencement of the trip. This information can also be arranged by the mediating travel agency due to its own legal obligation (i.e. based on the Cyprus transition or the respective national law statutes, in the country where the travel modules are offered) and should be documented by this. Swan Hellenic Travel provides further information via its website and in the booking systems by accessing suitable databases.

**12.3** The customer himself is responsible for retrieving the further information suitable for him until departure, obtaining and carrying the travel documents required by the authorities, any necessary vaccinations and compliance with customs and foreign exchange regulations. This is also valid for travel ban and special authorities request regarding pandemic suspect or sudden border closure for traveller from distinctive countries with a high pandemic risk level. Any disadvantages resulting from non-compliance with these regulations, e.g. the payment of withdrawal costs or official fines, shall be borne by the customer. This shall not apply if Swan Hellenic Travel or the travel agent has failed to provide adequate or incorrect information.

**12.4** Swan Hellenic Travel shall not be liable for the timely issue and receipt of necessary visas by the respective diplomatic representation if the customer has commissioned Swan Hellenic Travel with the procurement, unless Swan Hellenic Travel has culpably breached its own obligations.

**13. DATA PROTECTION / RIGHT TO OBJECT TO ADVERTISING**

The personal data provided by the customer to Swan Hellenic Travel will be electronically processed, stored and used to the extent necessary for the execution of the contract, for the processing of the trip, for customer support or for the fulfilment of statutory provisions. In addition, if the customer has agreed to this, the data will be used for market research purposes and to send current information and offers. Swan Hellenic Travel processes the booking order on the basis of the GDPR, taking into account the applicable data protection regulations. The customer has the right to object to this further use of data at any time or to revoke the consent given for the aforementioned purposes at any time. For this purpose, the customer shall contact Swan Hellenic Travel, data protection officer, address Cyprus, by e-mail to [dpo@SwanHellenic.com](mailto:dpo@SwanHellenic.com) or by post to Swan Hellenic Travel. The customer can find more details in the Swan Hellenic Travel DATA PROTECTION DECLARATION.

**14. CHOICE OF LAW / PLACE OF JURISDICTION / GENERAL CLAUSE**

**14.1** Unless otherwise stipulated for the benefit of the customer in regulations or international conventions which are mandatory for the travel contract, the entire contractual and legal relationship between Swan Hellenic Travel and the customer shall be governed exclusively by Cyprus law.

**14.2** Complaints against Swan Hellenic Travel shall be brought before the competent local and factual courts for the registered office of Swan Hellenic Travel Ltd. - Cyprus, unless mandatory statutory provisions or international agreements stipulate otherwise.

**14.3** The place of jurisdiction for actions brought by Swan Hellenic Travel against customers or contractual partners of the travel contract who are merchants, legal entities under public or private law or persons who have their place of residence or habitual abode abroad, or whose place of residence or habitual abode is unknown at the time the action is brought, shall be the registered office of Swan Hellenic Travel in Nicosia - Cyprus.

**14.4** The invalidity of individual provisions of the travel contract and/or these travel conditions shall not result in the invalidity of the entire travel contract or the entire travel conditions.

**TOUR OPERATOR:**

Tour Operator: Swan Hellenic Travel Ltd.: Themistokli Dervi 20, Flat/Office 301, 1066 Nicosia, Cyprus [www.SwanHellenic.com](http://www.SwanHellenic.com)

Authorised recipient and representative:

Swan Hellenic Travel Ltd. UK Branch: 60 Petty France, London, SW1H 9EU [support@SwanHellenic.com](mailto:support@SwanHellenic.com)

Swan Hellenic Travel Ltd. German Branch: Koenigsallee 14, Dusseldorf, 40212 [support@SwanHellenic.com](mailto:support@SwanHellenic.com)

Insolvency bonding:

For cruise packages ACTA: 24 Stasikratous Street, 1065 Nicosia, Cyprus

The main rights of customers/travellers under Directive (EU) 2015/2302 are set out below:

Form for informing the traveller of a cruise package in accordance with EU Package Travel Directive

The combination of travel services offered to you is a cruise package within the meaning of Directive (EU) 2015/2302.

You can therefore take advantage of all the EU rights that apply to package travel. Swan Hellenic Travel Ltd. is fully responsible for the proper execution of the entire package.

In addition, Swan Hellenic Travel Cruises Ltd. has the statutory security to repay your payments and, if the transport is included in the package, to secure your return transport in the event of its insolvency.

Main rights under Directive (EU) 2015/2302:

- Passengers will receive all essential information about the package prior to the conclusion of the package travel contract.
- At least one contractor is always liable for the proper provision of all travel services included in the contract.
- Travellers receive an emergency telephone number or contact details of a contact point where they can contact the tour operator or travel agency.
- Travellers may transfer the package to another person within a reasonable time and possibly at additional cost.
- The price of the package may only be increased if certain costs (e.g. fuel prices) increase and if this is expressly provided for in the contract, and in any event no later than 20 days before the package commences. If the price increase exceeds 8% of the package price, the traveller may withdraw from the contract. If a tour operator reserves the right to a price increase, the traveller has the right to a price reduction if the corresponding costs are reduced.
- Travellers may withdraw from the contract without paying a cancellation fee and will receive full reimbursement of all payments if any of the essential elements of the package other than the price is substantially changed. If the operator responsible for the package cancels the package before its commencement, travellers shall be entitled to reimbursement and, in certain circumstances, compensation.
- In exceptional circumstances, travellers may withdraw from the contract before the package starts without paying a cancellation fee, for example if there are serious safety problems at destination which are likely to affect the package.
- In addition, travellers may withdraw from the contract at any time before the start of the package against payment of a reasonable and justifiable cancellation fee.
- If after the start of the cruise package essential components of the cruise package cannot be carried out as agreed, the traveller shall be offered appropriate other precautions at no additional cost. The traveller can withdraw from the contract without paying a cancellation fee (in the Federal Republic of Germany this right is called "termination") if services are not provided in accordance with the contract and this has considerable effects on the provision of the contractual cruise package services and the tour operator fails to remedy the situation.
- The traveller is entitled to a price reduction and/or compensation if the travel services are not provided or not provided properly.
- The tour operator will assist the traveller if he is in difficulties. In the event of the insolvency of the tour operator or, in some Member States, of the travel agent, payments will be refunded. If the insolvency of the tour operator or, if relevant, of the travel agent occurs after the package has commenced and the carriage forms part of the package, the return of the passengers shall be guaranteed. Swan Hellenic Travel Ltd. has concluded insolvency bonding with ACTA: 24 Stasikratous Street, 1065 Nicosia, Cyprus

Thanks for embracing  
our travel philosophy